

University of California ~ Effort Reporting System Installation and Operations Guide

Release 6
August 14, 2006

Application Technology Services
Information Resources & Communications
Office of the President

Contents

Planning for Installation	1
Pre-Installation	4
Front-End Requirements.....	7
Deploy WAR.....	8
Database Setup	9
Initial Customization.....	11
Installation Checklist	14
Batch Installation Verification.....	15
Online Installation Verification.....	24
Operations Overview	33
Batch Interface File Loading.....	33
Batch Report Period Processing.....	36
Additional Batch Programs	37
System Administration	38
Post-Installation Tasks.....	43
Application Source Documentation	44
Application Database Tables.....	45

Planning for Installation

The Effort Reporting System relies on data that comes from other systems. ERS takes six input or “interface” files and stores this data. Initially, ERS has no data of its own until batch processing is run to create effort reports. At that point, ERS uses the data loaded via the interface files to create new data in the form of generated effort reports.

Planning for installation requires that the ERS input data requirements be analyzed and the appropriate data sources be identified from existing external systems. In most cases, additional programming will be required to extract the required data from these external systems and format this data for loading into ERS.

The format and content of the ERS input files is documented in the latest version of the *ERS Interface Specification*.

ERS accepts six interface files:

PPS Interface (required interface file):

Input from the Base Payroll/Personnel System (PPS) is already formatted for use in ERS by a Base PPS program. The PPS sequential PAR file is read and selected data elements are extracted and formatted for loading into ERS.

FS Interface (required interface file):

The financial systems (FS) interface file contains data from the chart of accounts and/or contracts and grants system. It identifies all account/fund combinations that are used for payroll charges, as well as sponsored projects (grants) that are subject to effort reporting.

DEPT Interface (required interface file):

The departments (DEPT) interface file contains the organizational hierarchy which is used by ERS to associate account/fund combinations and sponsored projects with their responsible department or organizational unit.

CS Interface (optional interface file):

The cost sharing (CS) interface file is optional. If present, it should contain the cost sharing commitments for each employee on each sponsored project. These commitments are presented on the effort report as default values. If this interface file is not loaded, employees can still enter cost sharing percents on the effort report manually.

USER Interface (optional interface file):

The user (USER) interface file is optional. If present, it should contain all users that will be allowed to access ERS and associates these users with their employee ID.

All of the interface files are expected to be loaded into ERS on a recurring basis, based on campus processing schedules. For ERS processing purposes, the recommendation is that PPS Interface files be created and loaded after each payroll compute. Campus financial system interface files should be loaded to be in sync with the PPS interface files so that account/fund combinations present in payroll transactions can be matched to their FAU. The CS interface can be loaded on a recurring basis but should at least be present prior to initiating a new effort reporting period. The USER interface should be loaded as frequently as is required to maintain access to the ERS web application.

ORGDEPT Interface (optional interface file):

The ORGDEPT interface file is optional and is used in conjunction with the decentralized security administration feature. The file associates organization unit codes typically found in financial systems, with Home Department codes which are used by the Payroll/Personnel (PPS) system. In order for departmental security administrators to be able to create permissions based on PPS Home Department, the system must be loaded with the data that associates the Home Department code with the organization unit codes that are used to control ERS authorization.

For more information on the format and content of these interface files, refer to the current version of the *ERS Interface Specification*.

For more information on how the interface files are used during ERS processing, read the sections of this document entitled “Operations Overview” and “Batch Interface File Loading.”

Initial Definition of ERS Schedule and Payroll Characteristics

During the installation process, a database install script is executed to populate the ERS schedule tables and the payroll transaction selection criteria tables. The data loaded by the install script should not be used for production purposes.

In planning for installation, the database installation script should be reviewed and modified to implement the desired schedule and to conform to payroll system conventions.

ERS allows flexible definition of a schedule, which is essentially a set of reporting periods and the attributes that will cause employees to be assigned to that schedule. Planning for the ERS schedule should address the following questions:

- What will the effort reporting schedule be?

- How many reporting periods?
- Which types of employee will be included in each reporting period?

With respect to payroll transaction selection criteria, ERS requires a current list of DOS codes used by the Payroll/Personnel System to identify payments for summer or off-period research. These codes must be loaded via the database installation script. In addition, the DOS Pay Category and DOS Time Code tables are loaded via the installation script and the values should be reviewed for any special situations that may exist in the Payroll/Personnel System.

Selection of the Project_ID Field in the FS Interface

The value selected for the Project_ID field is critical to ERS because it influences many aspects of the system's appearance and operation.

The Project_ID groups together all FAU's (account/fund combinations) that should be reported as a single line on the effort report. Each distinct Project_ID that is flagged as *requiring certification* will appear on a separate line of the effort report "above the line".

The Project ID may be a sponsored project identifier from an existing campus system or it may be some portion of the FAU itself. In many cases, the Fund element from the FAU is an appropriate value to use as the Project ID, either alone or in combination with other components of the FAU.

Pre-Installation

The pre-installation process involves establishing the application environment on the target server. The pre-installation steps are:

A current release of the full Java SDK should be installed and the JAVA_HOME environment variable set appropriately.

A Java application server should be installed and configured with appropriate JDBC driver for the campus back-end DBMS. The application ships with JAR files for native “Type 4” drivers for Sybase (jconn2), MS SQL Server (jtds), Oracle (ojdbc), and DB2 versions 7 and 8 (db2jcc) in the WEB-INF/lib folder. These JAR files may be copied to classpath locations as required by the app server’s configuration documentation or may be used directly from the ERS application folder.

The application server must be configured to recognize JSP page fragment files (*.JSPF) which are used by the application. The steps to create this configuration are specific to the application server product being used.

In Tomcat, the following servlet mapping should be added to the server’s WEB.XML:

```
<servlet-mapping>
  <servlet-name>jsp</servlet-name>
  <url-pattern>*.jspf</url-pattern>
</servlet-mapping>
```

In the Sun Java System Application Server, this mapping should be added to the server’s DEFAULT-WEB.XML.

In IBM Websphere, the file IBM-WEB-EXT.XMI must be created with the “jsp.file.extensions” property set. A working version of this file is included in the application WAR file and will be installed during application deployment.

Configure EHCache Temp Directory

ERS uses EHCache as a secondary cache to speed up application performance. This mechanism stores frequently used, read-only data in memory so that it does not have to be accessed from the database repeatedly. EHCache uses the Java tempdir system parameter to determine where it will place its temporary disk files. In an environment where multiple instances of the ERS application are run on a single server, the tempdir parameter must be configured to point to a unique path so that the application instances do not attempt to write to the same cache files.

Consult the application server documentation for information on how to specify a value for the `java.io.tmpdir` system parameter.

The batch scripts provided with the ERS distribution provide this value and can be customized to supply an installation-specific value.

Hibernate Caching

ERS uses the caching features of Hibernate to improve performance. Certain tables that are read-only are loaded in the cache. In a clustered environment, each application server maintains its own cache and ERS does not provide mechanism to synchronize caches across the cluster. Therefore, tables that are updateable cannot be cached using this mechanism without creating potential data integrity issues.

Configuration File Management

Review the section below entitled “Configuration File Management” for additional requirements for establishing the application server’s CLASSPATH.

Session Management and Time-Out

The application server performs session management on behalf of the application. The session management services control the “time out” feature which invalidates a session after a period of activity. The steps to change the default value of 30 minutes are specific to the application server product being used.

Transaction Management and Clustering

ERS is enabled for cluster support by insuring that all updating is accomplished by database supplied transaction management. ERS uses the underlying transaction capability of the supported back-end database systems.

In addition, for critical online processes, ERS checks to insure that long-running transactions (any transaction that spans a network interaction), enforces an optimistic lock strategy that checks before updating that the data has not been altered by another online user.

Finally, ERS uses Hibernate facilities to insure that system assigned primary keys also come from the database and are guaranteed by the database to be unique.

Front-End Requirements

ERS supports most modern browsers on both PC and Mac platforms. Specific products and versions that have been tested are:

PC

Microsoft Internet Explorer (recommended)

Firefox (recommended)

Mozilla

Netscape

Mac OS X

Safari (recommended)

Firefox (recommended)

Mozilla

Netscape 7+

Microsoft Internet Explorer 5.2+ (not recommended)

Mac OS 9

Netscape 7

Mozilla

Microsoft Internet Explorer 5.1+ (not recommended)

Javascript must be enabled. The ERS application makes extensive use of Javascript which must be enabled on the browser in order for the application to load.

Cookies must be enabled. The application server makes use of cookies for session management which the ERS application relies on.

Deploy WAR

The WAR file should be deployed using the application server's web administration console. This insures that the application is placed in the correct directory or folder, and that application server configuration XML files are updated correctly.

If using the application server's web administration console, follow that product's instructions for deploying a new web application packaged in WAR format.

Note that multiple installations of ERS on a single application server will require choosing a different Context Root for each instance of the application.

It is possible to expand the WAR file from the command line using the Java `jar` command with similar parameters as `tar`:

```
jar -xvf /pathtowar/EffortReporting.war
```

If using the `jar` command for manual extraction, the command should run from the application target directory. First, create an `EffortReporting` directory within the application server's web applications folder, then change to that directory and run the `jar` command above. When installing multiple instances of ERS using this method, it will likely be necessary to manually edit the application context XML file to alter the Context Root name.

This selected installation directory or folder will be referred to as the `<application-folder>` throughout the rest of this document.

Database Setup

The database setup process involves establishing the ERS application database on the target DBMS. The database must first be created in the target DBMS using the product's administrative tool.

The Create Script

The database create scripts are placed in the <application-folder>/sql folder.

Run the appropriate DBMS-specific create script to create all the ERS database tables, indexes and views:

ERS_CREATE_TABLE_SCRIPT_SYBASE	for Sybase and MS SQL Server
ERS_CREATE_TABLE_SCRIPT_ORACLE	for Oracle 8-10
ERS_CREATE_TABLE_SCRIPT_DB2_V7	for DB2 V7 (z/OS)
ERS_CREATE_TABLE_SCRIPT_DB2_V8	for DB2 V8 (UDB or LUW)

The Install Scripts

The database install scripts are placed in the <application-folder>/sql folder.

The BASE installation scripts load several database tables with static data. These scripts should not require modification for a base installation.

Run the appropriate DBMS-specific install BASE script to load the ERS database tables:

ERS_INSTALL_BASE_SYBASE	for Sybase and MS SQL Server
ERS_INSTALL_BASE_ORACLE	for Oracle 8-10
ERS_INSTALL_BASE_DB2V7	for DB2 V7 (z/OS)
ERS_INSTALL_BASE_DB2V8	for DB2 V8 (UDB or LUW)

The remaining tables contain static data used by the application and should not require modification for initial installation.

The MODIFY installation scripts load several tables with campus-specific static data and starter data to facilitate testing. These scripts should be reviewed for campus requirements and modified as necessary. Tables loaded by the MODIFY scripts which should be reviewed include:

ERSDOSCode – should include all DOS code values used in the campus Payroll Personnel System (PPS) to pay summer quarter or off-period research. These codes are typically named “Additional Compensation-Research.” These DOS code values must be identified so that the correct payroll transactions can be placed on a special off-period effort report produced for academic staff.

All other payroll transactions will be included in the effort report calculation, subject to the filtering values on the Time Code and Pay Category tables.

ERSScheduleType, ERScheduleModel and ERSReportingPeriod – these tables are used in the creation of the campus effort reporting schedule. A default schedule is created by the installation script. The default schedule can be modified by editing the installation script or can be modified using the System Administration screens after initial installation. See the System Administration section of this document for a complete discussion of the schedule definition process.

ERSUser – creates a login ID called “sys.admin” for initial setup. Change the email address on this INSERT statement to one that is accessible to the person installing ERS.

Run the appropriate DBMS-specific install script to load the ERS database tables:

ERS_INSTALL_MODIFY_SYBASE	for Sybase and MS SQL Server
ERS_INSTALL_MODIFY_ORACLE	for Oracle 8-10
ERS_INSTALL_MODIFY_DB2_V7	for DB2 V7 (z/OS)
ERS_INSTALL_MODIFY_DB2_V8	for DB2 V8 (UDB or LUW)

Database UserID

The web application uses a single login ID to access the back-end database. This login ID and password are coded into the Hibernate configuration files and should be updated based on the target DBMS.

The web application login ID must be GRANTED full access (INSERT, UPDATE and DELETE) to all database tables. No other database privileges are required. The application does not make use of any stored procedures.

A sample script that contains the necessary GRANT statements is provided in the <application-folder>/sql folder. The database userid should be substituted for the marker *WEBUSER* in this script.

ERS_TABLE_GRANT_SCRIPT_ALLDBMS	for all databases
--------------------------------	-------------------

Initial Customization

Although the master configuration file is documented in detail in the *ERS Customization Guide*, some minimal customization of this file is required to complete the installation and verification steps.

Configuration File Management

Sample ERS configuration files are provided in the <application-folder>/config folder. These files should not be used as distributed because they will be overwritten by deployment of a new ERS release. The sample files only require minimal modification to prepare them for an operational ERS installation. Copy the sample files to a location outside the ERS installation folder and edit the files as necessary to customize for your installation.

The configuration files that must be copied and may be modified are:

- `ERSSConfig.XML` - contains all ERS operating parameters
- `hibernate.properties` - contains database connection settings
- `ExternalizedStrings.XML` - contains customizable field labels for various parts of the web application

These contents of these files are documented in the *ERS Customization Guide*.

Multiple sets of configuration files can be created and stored separately for development, QA and production environments. The ERS application server searches for its configuration files on the CLASSPATH. To insure that the correct set of configuration files is used, modify the application server CLASSPATH by placing the path to the appropriate configuration file folder at the beginning of the CLASSPATH.

Configure Mail Server settings

The `ERSSConfig.XML` file contains settings to define the campus mail server which the application should use to send system-generated messages.

```
<Notification>  
  <MailServer>smtp.ucop.edu</MailServer>
```

Modify the value of the MailServer item to a valid host name for a campus SMTP server that can send messages to campus e-mail addresses.

Configure Hibernate

Hibernate is the software layer that provides object persistence for the ERS application. It manages the database connection using JDBC services as well as providing services for database transactions and connection pooling.

The Hibernate configuration is contained in the DatabaseConfiguration section of ERSEConfig.XML:

```
<DatabaseConfiguration>
  <PropFiles>
    <PropFile>hibernate.base.properties</PropFile>
    <PropFile>hibernate.trn01.properties</PropFile>
  </PropFiles>
</DatabaseConfiguration>
```

- The first properties file contains several Hibernate configuration settings that are common to all environments. The hibernate.base.properties file should not require modification.
- The second properties file contains several Hibernate configuration settings that are specific to the DBMS being used for the ERS application.

```
# Hibernate sample properties for Sybase
hibernate.connection.url=jdbc:sybase:Tds:sybserv4.ucop.edu:2125/ersdev
hibernate.connection.username=ersdbo
hibernate.connection.password=xxxxxx
hibernate.dialect=net.sf.hibernate.dialect.SybaseDialect
hibernate.connection.driver_class=com.sybase.jdbc2.jdbc.SybDriver
```

Edit the values for these properties as appropriate for the campus installation. The username and password properties should be set to the database userID created in the previous installation step.

Note that multiple properties files can be created to support development, test and production environments. The ERSEConfig.XML file can be modified to reference a different Hibernate properties file thus changing the DBMS to which the application will connect.

The base ERS installation provides a number of sample properties files for various database systems that can be used as models for campus implementation.

Customize Batch Processing Scripts

Shell scripts for invoking ERS batch processing programs are provided in the batch folder for both Unix and Windows. These scripts require some customization before they can be executed in the installed environment.

SET-JAVA-PATH – change the JAVA_BIN_DIR to point to the location where your Java JDK is installed

Change CACHE-DIR to the instance-specific temp directory where the EHcache temporary files can be written.

SET-CLASSPATH – change WEB_ROOT to the path to the installation directory of ERS on the application server.

Change CLASSPATH to the instance-specific configuration directory where the application configuration files are located.

Optionally, you may further append to the CLASSPATH to specify the location of a JDBC driver JAR that is required for your environment.

These scripts are references by the other batch processing scripts which do not require modification.

Read the README file in the <application-folder>/batch folder for more information on running ERS batch programs.

Installation Checklist

- ☒ Perform pre-installation steps on the host server to establish a Java environment and customize the Java application server.
 - ☐ Full JDK installed
 - ☐ Application server installed
 - ☐ Application server modified for JSPF
 - ☐ Config directory created and path added to CLASSPATH
- ☒ Deploy the application WAR file to the target server
- ☒ Create the application database
 - ☐ Run the database create script
 - ☐ Create a database user ID for the application and grant SELECT, INSERT, UPDATE and DELETE permissions on all ERS tables
 - ☐ Review and modify the database install script
 - ☐ Run the install script
- ☒ Configure Hibernate
 - ☐ Edit `ERSConfig.XML` and Hibernate properties files
 - ☐ Copy to a config folder
 - ☐ Add the config folder path to the application server CLASSPATH
- ☒ Customize batch processing scripts
- ☒ Perform batch installation verification
- ☒ Start application server and monitor initialization for any error messages
- ☒ Perform online installation verification
 - ☐ Access web application URL
 - ☐ Request password for Sys.Admin
 - ☐ Follow password reset procedure
 - ☐ Login as Sys.Admin
- ☒ Prepare input files according to ERS Interface Specification
- ☒ Load interface files using batch programs
- ☒ Generate effort reports for one or more reporting periods

Batch Installation Verification

Change directory to the <application-folder>/batch folder.

Run `ers-install-test.sh` shell script to verify connectivity from the Java environment to the database verifying Hibernate, JDBC and driver components. Note: This is a batch verification only and does not validate the application server configuration.

Modifications of this shell script may be required for the local environment. Check platform-specific variables that reference file system paths and edit as necessary – specifically `AS_ROOT` (for the application server root directory) and `JAVA_HOME` (for the JDK). Also, file permissions may need to be modified to allow script execution.

Expected output from test script:

```
16:56:00,392 INFO Environment:487 - Hibernate 2.1.9
16:56:00,400 INFO Environment:521 - loaded properties from resource hibernate.properties:
{hibernate.cglib.use_reflection_optimizer=true}
16:56:00,404 INFO Environment:547 - using CGLIB reflection optimizer
16:56:00,407 INFO Environment:576 - using JDK 1.4 java.sql.Timestamp handling
16:56:00,411 INFO Configuration:909 - configuring from resource: /hibernate.cfg.xml
16:56:00,413 INFO Configuration:881 - Configuration resource: /hibernate.cfg.xml
16:56:00,909 INFO Configuration:332 - Mapping resource:
edu/ucop/ers/domain/costsharingCommitment.hbm
16:56:01,045 INFO Binder:229 - Mapping class: edu.ucop.ers.domain.CostSharingCommitment ->
ERSCSEmpl
16:56:01,386 INFO Configuration:332 - Mapping resource: edu/ucop/ers/domain/comment.hbm
16:56:01,426 INFO Binder:229 - Mapping class: edu.ucop.ers.domain.Comment -> ERSCComments
16:56:01,443 INFO Configuration:332 - Mapping resource: edu/ucop/ers/domain/DOSCode.hbm
16:56:01,484 INFO Binder:229 - Mapping class: edu.ucop.ers.domain.DOSCode -> ERSDOSCode
16:56:01,504 INFO Configuration:332 - Mapping resource: edu/ucop/ers/domain/earning.hbm
16:56:01,558 INFO Binder:229 - Mapping class: edu.ucop.ers.domain.Earning -> ERSEarnings
16:56:01,561 INFO Binder:571 - Mapping collection: edu.ucop.ers.domain.Earning.earningsVersions
-> ERSEarningsVersion
16:56:01,571 INFO Configuration:332 - Mapping resource: edu/ucop/ers/domain/effortReport.hbm
16:56:01,604 INFO Binder:229 - Mapping class: edu.ucop.ers.domain.EffortReport -> ERSEffortRpt
16:56:01,613 INFO Binder:571 - Mapping collection:
edu.ucop.ers.domain.EffortReport.effortReportResources -> ERSERResource
16:56:01,625 INFO Binder:571 - Mapping collection:
edu.ucop.ers.domain.EffortReport.earningsVersions -> ERSEarningsVersion
16:56:01,626 INFO Configuration:332 - Mapping resource:
edu/ucop/ers/domain/effortReportResource.hbm
16:56:01,661 INFO Binder:229 - Mapping class: edu.ucop.ers.domain.EffortReportResource ->
ERSERResource
16:56:01,676 INFO Configuration:332 - Mapping resource: edu/ucop/ers/domain/employee.hbm
16:56:01,705 INFO Binder:229 - Mapping class: edu.ucop.ers.domain.Employee -> ERSEmpl
16:56:01,722 INFO Configuration:332 - Mapping resource: edu/ucop/ers/domain/function.hbm
16:56:01,744 INFO Binder:229 - Mapping class: edu.ucop.ers.domain.Function -> ERSFunction
16:56:01,748 INFO Binder:571 - Mapping collection: edu.ucop.ers.domain.Function.permissions ->
ERSUseFunction
16:56:01,749 INFO Configuration:332 - Mapping resource: edu/ucop/ers/domain/fundingSource.hbm
16:56:01,814 INFO Binder:229 - Mapping class: edu.ucop.ers.domain.FundingSource ->
ERSFundingSource
16:56:01,817 INFO Configuration:332 - Mapping resource: edu/ucop/ers/domain/itemCategory.hbm
16:56:01,836 INFO Binder:229 - Mapping class: edu.ucop.ers.domain.ItemCategory ->
ERSItemCategory
16:56:01,838 INFO Configuration:332 - Mapping resource: edu/ucop/ers/domain/organization.hbm
16:56:01,867 INFO Binder:229 - Mapping class: edu.ucop.ers.domain.Organization ->
ERSOrganization
16:56:01,878 INFO Configuration:332 - Mapping resource: edu/ucop/ers/domain/periodType.hbm
```

```

16:56:01,906 INFO Binder:229 - Mapping class: edu.ucop.ers.domain.PeriodType -> ERSPeriodType
16:56:01,921 INFO Configuration:332 - Mapping resource: edu/ucop/ers/domain/permission.hbm
16:56:01,946 INFO Binder:229 - Mapping class: edu.ucop.ers.domain.Permission -> ERSPermission
16:56:01,948 INFO Binder:571 - Mapping collection: edu.ucop.ers.domain.Permission.functions ->
ERSUseFunction
16:56:01,950 INFO Binder:571 - Mapping collection: edu.ucop.ers.domain.Permission.resources ->
ERSUseResource
16:56:01,951 INFO Binder:571 - Mapping collection: edu.ucop.ers.domain.Permission.roles ->
ERSRolePermission
16:56:01,952 INFO Configuration:332 - Mapping resource:
edu/ucop/ers/domain/possibleEffortReport.hbm
16:56:01,979 INFO Binder:229 - Mapping class: edu.ucop.ers.domain.PossibleEffortReport ->
ERSPossibleER
16:56:01,994 INFO Binder:571 - Mapping collection:
edu.ucop.ers.domain.PossibleEffortReport.earnings -> ERSPossibleEREarnings
16:56:01,996 INFO Configuration:332 - Mapping resource:
edu/ucop/ers/domain/reportCategoryItem.hbm
16:56:02,025 INFO Binder:229 - Mapping class: edu.ucop.ers.domain.ReportCategoryItem ->
ERSRptCatItem
16:56:02,042 INFO Binder:571 - Mapping collection:
edu.ucop.ers.domain.ReportCategoryItem.earnings -> ERSCatEarnings
16:56:02,044 INFO Configuration:332 - Mapping resource: edu/ucop/ers/domain/reportFundItem.hbm
16:56:02,061 INFO Binder:229 - Mapping class: edu.ucop.ers.domain.ReportFundItem ->
ERSRptFundItem
16:56:02,075 INFO Binder:571 - Mapping collection: edu.ucop.ers.domain.ReportFundItem.earnings -
> ERSFundEarnings
16:56:02,076 INFO Configuration:332 - Mapping resource: edu/ucop/ers/domain/reportingPeriod.hbm
16:56:02,109 INFO Binder:229 - Mapping class: edu.ucop.ers.domain.ReportingPeriod ->
ERSRptPeriod
16:56:02,112 INFO Configuration:332 - Mapping resource: edu/ucop/ers/domain/resource.hbm
16:56:02,183 INFO Binder:229 - Mapping class: edu.ucop.ers.domain.Resource -> ERSResource
16:56:02,197 INFO Binder:571 - Mapping collection: edu.ucop.ers.domain.Resource.permissions ->
ERSUseResource
16:56:02,199 INFO Configuration:332 - Mapping resource: edu/ucop/ers/domain/resourceType.hbm
16:56:02,225 INFO Binder:229 - Mapping class: edu.ucop.ers.domain.ResourceType -> ERSResType
16:56:02,228 INFO Configuration:332 - Mapping resource: edu/ucop/ers/domain/role.hbm
16:56:02,245 INFO Binder:229 - Mapping class: edu.ucop.ers.domain.Role -> ERSRole
16:56:02,247 INFO Binder:571 - Mapping collection: edu.ucop.ers.domain.Role.rolePermissions ->
ERSRolePermission
16:56:02,256 INFO Configuration:332 - Mapping resource: edu/ucop/ers/domain/scheduleModel.hbm
16:56:02,275 INFO Binder:229 - Mapping class: edu.ucop.ers.domain.ScheduleModel -> ERSSchModel
16:56:02,285 INFO Configuration:332 - Mapping resource: edu/ucop/ers/domain/scheduleType.hbm
16:56:02,302 INFO Binder:229 - Mapping class: edu.ucop.ers.domain.ScheduleType -> ERSSchType
16:56:02,324 INFO Binder:571 - Mapping collection:
edu.ucop.ers.domain.ScheduleType.homeDepartments -> ERSSchDept
16:56:02,325 INFO Configuration:332 - Mapping resource: edu/ucop/ers/domain/sponsoredProject.hbm
16:56:02,349 INFO Binder:229 - Mapping class: edu.ucop.ers.domain.SponsoredProject ->
ERSSponsoredProject
16:56:02,358 INFO Configuration:332 - Mapping resource: edu/ucop/ers/domain/statusCode.hbm
16:56:02,371 INFO Binder:229 - Mapping class: edu.ucop.ers.domain.StatusCode -> ERSStatusCode
16:56:02,376 INFO Configuration:332 - Mapping resource: edu/ucop/ers/domain/timeCode.hbm
16:56:02,389 INFO Binder:229 - Mapping class: edu.ucop.ers.domain.TimeCode -> ERSTimeCode
16:56:02,407 INFO Configuration:332 - Mapping resource: edu/ucop/ers/domain/titleCode.hbm
16:56:02,423 INFO Binder:229 - Mapping class: edu.ucop.ers.domain.TitleCode -> ERSTitleCode
16:56:02,435 INFO Configuration:332 - Mapping resource: edu/ucop/ers/domain/user.hbm
16:56:02,448 INFO Binder:229 - Mapping class: edu.ucop.ers.domain.User -> ERSUser
16:56:02,456 INFO Configuration:332 - Mapping resource: edu/ucop/ers/domain/userRole.hbm
16:56:02,473 INFO Binder:229 - Mapping class: edu.ucop.ers.domain.UserRole -> ERSUserRole
16:56:02,491 INFO Configuration:332 - Mapping resource: edu/ucop/ers/domain/payCategory.hbm
16:56:02,502 INFO Binder:229 - Mapping class: edu.ucop.ers.domain.PayCategory -> ERSPayCat
16:56:02,520 INFO Configuration:332 - Mapping resource: edu/ucop/ers/domain/homeDepartment.hbm
16:56:02,541 INFO Binder:229 - Mapping class: edu.ucop.ers.domain.HomeDepartment -> ERSHomeDept
16:56:02,543 INFO Binder:571 - Mapping collection:
edu.ucop.ers.domain.HomeDepartment.scheduleTypes -> ERSSchDept
16:56:02,550 INFO Configuration:332 - Mapping resource: edu/ucop/ers/domain/messageLog.hbm
16:56:02,626 INFO Binder:229 - Mapping class: edu.ucop.ers.domain.MessageLog -> ERSMessageLog
16:56:02,628 INFO Configuration:332 - Mapping resource: edu/ucop/ers/domain/includeEmployee.hbm
16:56:02,643 INFO Binder:229 - Mapping class: edu.ucop.ers.domain.IncludeEmployee ->
ERSIncludeEmpl
16:56:02,645 INFO Configuration:332 - Mapping resource:
edu/ucop/ers/domain/academicAppointmentBasis.hbm

```

```

16:56:02,654 INFO Binder:229 - Mapping class: edu.ucop.ers.domain.AcademicAppointmentBasis ->
ERSAcadApptBasis
16:56:02,664 INFO Configuration:332 - Mapping resource:
edu/ucop/ers/domain/academicPayPeriod.hbm
16:56:02,678 INFO Binder:229 - Mapping class: edu.ucop.ers.domain.AcademicPayPeriod ->
ERSAcadPayPer
16:56:02,689 INFO Configuration:332 - Mapping resource: edu/ucop/ers/domain/exemptIndicator.hbm
16:56:02,700 INFO Binder:229 - Mapping class: edu.ucop.ers.domain.ExemptIndicator ->
ERSExemptInd
16:56:02,707 INFO Configuration:332 - Mapping resource:
edu/ucop/ers/domain/personalProgramCode.hbm
16:56:02,721 INFO Binder:229 - Mapping class: edu.ucop.ers.domain.PersonalProgramCode ->
ERSPersPgmCode
16:56:02,729 INFO Configuration:332 - Mapping resource: edu/ucop/ers/domain/piEmployee.hbm
16:56:02,744 INFO Binder:229 - Mapping class: edu.ucop.ers.domain.PiEmployee -> ERSPIEmpl
16:56:02,746 INFO Configuration:332 - Mapping resource:
edu/ucop/ers/domain/actualEffortReport.hbm
16:56:02,757 INFO Binder:229 - Mapping class: edu.ucop.ers.domain.ActualEffortReport ->
ERSActualER
16:56:02,759 INFO Configuration:332 - Mapping resource: edu/ucop/ers/domain/notificationText.hbm
16:56:02,833 INFO Binder:229 - Mapping class: edu.ucop.ers.domain.NotificationText ->
ERSNotificationText
16:56:02,835 INFO Configuration:332 - Mapping resource: edu/ucop/ers/domain/notification.hbm
16:56:02,849 INFO Binder:229 - Mapping class: edu.ucop.ers.domain.Notification ->
ERSNotification
16:56:02,852 INFO Configuration:332 - Mapping resource: edu/ucop/ers/domain/criteriaMaster.hbm
16:56:02,867 INFO Binder:229 - Mapping class: edu.ucop.ers.domain.CriteriaMaster ->
ERSCriteriaMaster
16:56:02,877 INFO Configuration:332 - Mapping resource:
edu/ucop/ers/domain/criteriaAccountDepartment.hbm
16:56:02,888 INFO Binder:229 - Mapping class: edu.ucop.ers.domain.CriteriaAccountDepartment ->
ERSCriteriaAccountDepartment
16:56:02,897 INFO Configuration:332 - Mapping resource:
edu/ucop/ers/domain/criteriaFundDepartment.hbm
16:56:02,908 INFO Binder:229 - Mapping class: edu.ucop.ers.domain.CriteriaFundDepartment ->
ERSCriteriaFundDepartment
16:56:02,919 INFO Configuration:332 - Mapping resource: edu/ucop/ers/domain/criteriaEmployee.hbm
16:56:02,934 INFO Binder:229 - Mapping class: edu.ucop.ers.domain.CriteriaEmployee ->
ERSCriteriaEmployee
16:56:02,943 INFO Configuration:332 - Mapping resource:
edu/ucop/ers/domain/criteriaHomeDepartment.hbm
16:56:02,953 INFO Binder:229 - Mapping class: edu.ucop.ers.domain.CriteriaHomeDepartment ->
ERSCriteriaHomeDepartment
16:56:02,963 INFO Configuration:332 - Mapping resource: edu/ucop/ers/domain/criteriaProject.hbm
16:56:02,976 INFO Binder:229 - Mapping class: edu.ucop.ers.domain.CriteriaProject ->
ERSCriteriaProject
16:56:02,987 INFO Configuration:332 - Mapping resource:
edu/ucop/ers/domain/criteriaFundingSource.hbm
16:56:02,998 INFO Binder:229 - Mapping class: edu.ucop.ers.domain.CriteriaFundingSource ->
ERSCriteriaFundingSource
16:56:03,005 INFO Configuration:332 - Mapping resource: edu/ucop/ers/domain/notificationRole.hbm
16:56:03,017 INFO Binder:229 - Mapping class: edu.ucop.ers.domain.NotificationRole ->
ERSNotificationRole
16:56:03,027 INFO Configuration:332 - Mapping resource: edu/ucop/ers/domain/resetToken.hbm
16:56:03,038 INFO Binder:229 - Mapping class: edu.ucop.ers.domain.ResetToken -> ERSResetToken
16:56:03,040 INFO Configuration:332 - Mapping resource: edu/ucop/ers/domain/preference.hbm
16:56:03,051 INFO Binder:229 - Mapping class: edu.ucop.ers.domain.Preference -> ERSPreference
16:56:03,053 INFO Configuration:1067 - Configured SessionFactory: null
16:56:03,055 INFO Configuration:641 - processing one-to-many association mappings
16:56:03,056 INFO Binder:1181 - Mapping collection:
edu.ucop.ers.domain.EffortReport.reportCategoryItems -> ERSRptCatItem
16:56:03,059 INFO Binder:1181 - Mapping collection:
edu.ucop.ers.domain.EffortReport.reportFundItems -> ERSRptFundItem
16:56:03,060 INFO Binder:1181 - Mapping collection: edu.ucop.ers.domain.EffortReport.comments ->
ERSComments
16:56:03,062 INFO Binder:1181 - Mapping collection:
edu.ucop.ers.domain.Employee.sponsoredProjectsByCoPiEmpId -> ERSSponsoredProject
16:56:03,064 INFO Binder:1181 - Mapping collection: edu.ucop.ers.domain.Employee.users ->
ERSUser
16:56:03,065 INFO Binder:1181 - Mapping collection:
edu.ucop.ers.domain.Employee.sponsoredProjectsByPiEmpId -> ERSSponsoredProject

```

```

16:56:03,066 INFO Binder:1181 - Mapping collection: edu.ucop.ers.domain.Employee.earnings ->
ERSEarnings
16:56:03,067 INFO Binder:1181 - Mapping collection:
edu.ucop.ers.domain.Employee.costSharingCommitments -> ERSCSEmpl
16:56:03,068 INFO Binder:1181 - Mapping collection:
edu.ucop.ers.domain.Employee.possibleEffortReports -> ERSPossibleER
16:56:03,069 INFO Binder:1181 - Mapping collection:
edu.ucop.ers.domain.Employee.actualEffortReports -> ERSActualER
16:56:03,071 INFO Binder:1181 - Mapping collection:
edu.ucop.ers.domain.Employee.criteriaEmployees -> ERSEmpl
16:56:03,073 INFO Binder:1181 - Mapping collection:
edu.ucop.ers.domain.FundingSource.costSharingCommitments -> ERSCSEmpl
16:56:03,074 INFO Binder:1181 - Mapping collection:
edu.ucop.ers.domain.ItemCategory.reportCategoryItems -> ERSRptCatItem
16:56:03,075 INFO Binder:1181 - Mapping collection:
edu.ucop.ers.domain.Organization.criteriaAccountDepartments -> ERSCriteriaAccountDepartment
16:56:03,076 INFO Binder:1181 - Mapping collection:
edu.ucop.ers.domain.Organization.criteriaFundDepartments -> ERSCriteriaFundDepartment
16:56:03,077 INFO Binder:1181 - Mapping collection: edu.ucop.ers.domain.Organization.acctOrg ->
ERSFundingSource
16:56:03,080 INFO Binder:1181 - Mapping collection: edu.ucop.ers.domain.Organization.fundOrg ->
ERSFundingSource
16:56:03,081 INFO Binder:1181 - Mapping collection:
edu.ucop.ers.domain.PeriodType.reportingPeriods -> ERSRptPeriod
16:56:03,082 INFO Binder:1181 - Mapping collection: edu.ucop.ers.domain.PeriodType.timeCodes ->
ERSTimeCode
16:56:03,083 INFO Binder:1181 - Mapping collection: edu.ucop.ers.domain.PeriodType.payCatetories
-> ERSPayCat
16:56:03,134 INFO Binder:1181 - Mapping collection: edu.ucop.ers.domain.PeriodType.dosCodes ->
ERSDOSCode
16:56:03,135 INFO Binder:1181 - Mapping collection:
edu.ucop.ers.domain.PeriodType.scheduleModels -> ERSSchModel
16:56:03,136 INFO Binder:1181 - Mapping collection: edu.ucop.ers.domain.PeriodType.earnings ->
ERSEarnings
16:56:03,139 INFO Binder:1181 - Mapping collection:
edu.ucop.ers.domain.ReportingPeriod.possibleEffortReports -> ERSPossibleER
16:56:03,140 INFO Binder:1181 - Mapping collection:
edu.ucop.ers.domain.ReportingPeriod.actualEffortReports -> ERSActualER
16:56:03,141 INFO Binder:1181 - Mapping collection: edu.ucop.ers.domain.Role.roleUsers ->
ERSUserRole
16:56:03,142 INFO Binder:1181 - Mapping collection: edu.ucop.ers.domain.Role.notificationRoles -
> ERSNotificationRole
16:56:03,143 INFO Binder:1181 - Mapping collection: edu.ucop.ers.domain.ScheduleType.titleCodes
-> ERSTitleCode
16:56:03,145 INFO Binder:1181 - Mapping collection:
edu.ucop.ers.domain.ScheduleType.reportingPeriods -> ERSRptPeriod
16:56:03,146 INFO Binder:1181 - Mapping collection:
edu.ucop.ers.domain.ScheduleType.scheduleModels -> ERSSchModel
16:56:03,147 INFO Binder:1181 - Mapping collection:
edu.ucop.ers.domain.ScheduleType.exemptIndicators -> ERSExemptInd
16:56:03,148 INFO Binder:1181 - Mapping collection:
edu.ucop.ers.domain.ScheduleType.academicAppointmentBasises -> ERSAcadApptBasis
16:56:03,149 INFO Binder:1181 - Mapping collection: edu.ucop.ers.domain.ScheduleType.employees -
> ERSEmpl
16:56:03,150 INFO Binder:1181 - Mapping collection:
edu.ucop.ers.domain.ScheduleType.academicPayPeriods -> ERSAcadPayPer
16:56:03,151 INFO Binder:1181 - Mapping collection:
edu.ucop.ers.domain.ScheduleType.personalProgramCodes -> ERSPersPgmCode
16:56:03,153 INFO Binder:1181 - Mapping collection:
edu.ucop.ers.domain.SponsoredProject.fundingSources -> ERSFundingSource
16:56:03,154 INFO Binder:1181 - Mapping collection:
edu.ucop.ers.domain.SponsoredProject.reportFundItems -> ERSRptFundItem
16:56:03,155 INFO Binder:1181 - Mapping collection:
edu.ucop.ers.domain.SponsoredProject.criteriaProjects -> ERSCriteriaProject
16:56:03,157 INFO Binder:1181 - Mapping collection: edu.ucop.ers.domain.User.userCriteria ->
ERSCriteriaMaster
16:56:03,158 INFO Binder:1181 - Mapping collection: edu.ucop.ers.domain.User.userRoles ->
ERSUserRole
16:56:03,160 INFO Binder:1181 - Mapping collection: edu.ucop.ers.domain.HomeDepartment.employees
-> ERSEmpl

```

```

16:56:03,161 INFO Binder:1181 - Mapping collection:
edu.ucop.ers.domain.HomeDepartment.criteriaHomeDepartments -> ERSCriteriaHomeDepartment
16:56:03,162 INFO Binder:1181 - Mapping collection:
edu.ucop.ers.domain.ActualEffortReport.effortReports -> ERSEffortRpt
16:56:03,163 INFO Binder:1181 - Mapping collection:
edu.ucop.ers.domain.NotificationText.notificationRoles -> ERSNotificationRole
16:56:03,164 INFO Binder:1181 - Mapping collection:
edu.ucop.ers.domain.CriteriaMaster.criteriaProjects -> ERSCriteriaProject
16:56:03,166 INFO Binder:1181 - Mapping collection:
edu.ucop.ers.domain.CriteriaMaster.criteriaAccountDepartments -> ERSCriteriaAccountDepartment
16:56:03,167 INFO Binder:1181 - Mapping collection:
edu.ucop.ers.domain.CriteriaMaster.criteriaHomeDepartments -> ERSCriteriaHomeDepartment
16:56:03,168 INFO Binder:1181 - Mapping collection:
edu.ucop.ers.domain.CriteriaMaster.criteriaEmployees -> ERSCriteriaEmployee
16:56:03,169 INFO Binder:1181 - Mapping collection:
edu.ucop.ers.domain.CriteriaMaster.criteriaFundDepartments -> ERSCriteriaFundDepartment
16:56:03,170 INFO Binder:1181 - Mapping collection:
edu.ucop.ers.domain.CriteriaMaster.criteriaFundingSources -> ERSCriteriaFundingSource
16:56:03,171 INFO Binder:1181 - Mapping collection:
edu.ucop.ers.domain.CriteriaMaster.defaultPreferences -> ERSPreference
16:56:03,172 INFO Binder:1181 - Mapping collection:
edu.ucop.ers.domain.CriteriaMaster.adHocPreferences -> ERSPreference
16:56:03,174 INFO Binder:1181 - Mapping collection:
edu.ucop.ers.domain.CriteriaMaster.lastSearchPreferences -> ERSPreference
16:56:03,175 INFO Configuration:650 - processing one-to-one association property references
16:56:03,179 INFO Configuration:675 - processing foreign key constraints
16:56:03,209 INFO Dialect:86 - Using dialect: net.sf.hibernate.dialect.Oracle9Dialect
16:56:03,222 INFO SettingsFactory:74 - Use outer join fetching:true
16:56:03,228 INFO DriverManagerConnectionProvider:42 - Using Hibernate built-in connection pool
(not for production use!)
16:56:03,230 INFO DriverManagerConnectionProvider:43 - Hibernate connection pool size: 20
16:56:03,281 INFO DriverManagerConnectionProvider:77 - using driver:
oracle.jdbc.driver.OracleDriver at URL: jdbc:oracle:thin:@128.48.53.137:1521:ersucdavistst
16:56:03,282 INFO DriverManagerConnectionProvider:78 - connection properties: {user=ersdb,
password=ersteam1}
16:56:03,290 INFO TransactionManagerLookupFactory:33 - No TransactionManagerLookup configured
(in JTA environment, use of process level read-write cache is not recommended)
16:56:03,787 INFO SettingsFactory:114 - Use scrollable result sets: true
16:56:03,788 INFO SettingsFactory:117 - Use JDBC3 getGeneratedKeys(): false
16:56:03,789 INFO SettingsFactory:120 - Optimize cache for minimal puts: false
16:56:03,790 INFO SettingsFactory:129 - Query language substitutions: {}
16:56:03,791 INFO SettingsFactory:140 - cache provider: net.sf.hibernate.cache.EhCacheProvider
16:56:03,799 INFO Configuration:1130 - instantiating and configuring caches
16:56:03,814 WARN Configurator:123 - No configuration found. Configuring ehcache from ehcache-
failsafe.xml found in the classpath: jar:file:/root/WEB-INF/lib/ehcache-0.7.jar!/ehcache-failsafe.xml
16:56:03,856 INFO SessionFactoryImpl:119 - building session factory
16:56:04,997 INFO SessionFactoryObjectFactory:82 - Not binding factory to JNDI, no JNDI name
configured

```

Printing from Query = from ReportingPeriod

Printing Record number: 1

```

acadEndDate = 2004-12-18 12:00:00.0
acadSrtDate = 2004-09-27 12:00:00.0
addDate = 2005-09-27 11:33:21.0
addUser = *INSTALL*
certDate = 2005-03-15 12:00:00.0
chgDate = null
chgUser = null
endDate = 2004-10-31 12:00:00.0
id = 1
perCd = 1
perName = Fall 04/05 9/12 Academics
periodInited = N
rptDate = 2004-12-15 12:00:00.0

```

srtDate = 2004-07-01 12:00:00.0

Printing Record number: 2

acadEndDate = 2005-03-23 12:00:00.0
acadSrtDate = 2005-01-03 12:00:00.0
addDate = 2005-09-27 11:33:21.0
addUser = ***INSTALL***
certDate = 2005-07-15 12:00:00.0
chgDate = null
chgUser = null
endDate = 2005-02-28 12:00:00.0
id = 2
perCd = 2
perName = Winter 04/05 9/12 Academics
periodInitiated = N
rptDate = 2005-04-15 12:00:00.0
srtDate = 2004-11-01 12:00:00.0

Printing Record number: 3

acadEndDate = 2005-06-16 12:00:00.0
acadSrtDate = 2005-03-29 12:00:00.0
addDate = 2005-09-27 11:33:21.0
addUser = ***INSTALL***
certDate = 2005-11-15 12:00:00.0
chgDate = null
chgUser = null
endDate = 2005-06-30 12:00:00.0
id = 3
perCd = 3
perName = Spring 04/05 9/12 Academics
periodInitiated = N
rptDate = 2005-08-15 12:00:00.0
srtDate = 2005-03-01 12:00:00.0

Printing Record number: 4

acadEndDate = 2004-09-10 12:00:00.0
acadSrtDate = 2004-06-21 12:00:00.0
addDate = 2005-09-27 11:33:21.0
addUser = ***INSTALL***
certDate = 2005-02-15 12:00:00.0
chgDate = null
chgUser = null
endDate = 2004-09-30 12:00:00.0
id = 4
perCd = 1
perName = Summer 04/05 11/12 Academics
periodInitiated = N
rptDate = 2004-11-15 12:00:00.0
srtDate = 2004-07-01 12:00:00.0

Printing Record number: 5

acadEndDate = 2004-12-18 12:00:00.0
acadSrtDate = 2004-09-27 12:00:00.0

addDate = 2005-09-27 11:33:21.0
addUser = ***INSTALL***
certDate = 2005-05-15 12:00:00.0
chgDate = null
chgUser = null
endDate = 2004-12-31 12:00:00.0
id = 5
perCd = 2
perName = Fall 04/05 11/12 Academics
periodInitiated = N
rptDate = 2005-02-15 12:00:00.0
srtDate = 2004-10-01 12:00:00.0

Printing Record number: 6

acadEndDate = 2005-03-23 12:00:00.0
acadSrtDate = 2005-01-03 12:00:00.0
addDate = 2005-09-27 11:33:21.0
addUser = ***INSTALL***
certDate = 2005-08-15 12:00:00.0
chgDate = null
chgUser = null
endDate = 2005-03-31 12:00:00.0
id = 6
perCd = 3
perName = Winter 04/05 11/12 Academics
periodInitiated = N
rptDate = 2005-05-15 12:00:00.0
srtDate = 2005-01-01 12:00:00.0

Printing Record number: 7

acadEndDate = 2005-06-16 12:00:00.0
acadSrtDate = 2005-03-29 12:00:00.0
addDate = 2005-09-27 11:33:21.0
addUser = ***INSTALL***
certDate = 2005-11-15 12:00:00.0
chgDate = null
chgUser = null
endDate = 2005-06-30 12:00:00.0
id = 7
perCd = 4
perName = Spring 04/05 11/12 Academics
periodInitiated = N
rptDate = 2005-08-15 12:00:00.0
srtDate = 2005-04-01 12:00:00.0

Printing Record number: 8

acadEndDate = 2004-09-10 12:00:00.0
acadSrtDate = 2004-06-21 12:00:00.0
addDate = 2005-09-27 11:33:21.0
addUser = ***INSTALL***
certDate = 2006-02-15 12:00:00.0
chgDate = null
chgUser = null
endDate = 2005-06-30 12:00:00.0

id = 8
perCd = 4
perName = Off Quarter 04/05 - Academics
periodInitiated = N
rptDate = 2005-11-15 12:00:00.0
srtDate = 2004-07-01 12:00:00.0

Printing Record number: 9

acadEndDate = 2004-09-30 12:00:00.0
acadSrtDate = 2004-07-01 12:00:00.0
addDate = 2005-09-27 11:33:21.0
addUser = ***INSTALL***
certDate = 2005-02-15 12:00:00.0
chgDate = null
chgUser = null
endDate = 2004-09-30 12:00:00.0
id = 9
perCd = 1
perName = Q1 04/05 - Non-academics
periodInitiated = N
rptDate = 2004-11-15 12:00:00.0
srtDate = 2004-07-01 12:00:00.0

Printing Record number: 10

acadEndDate = 2004-12-31 12:00:00.0
acadSrtDate = 2004-10-01 12:00:00.0
addDate = 2005-09-27 11:33:21.0
addUser = ***INSTALL***
certDate = 2005-05-15 12:00:00.0
chgDate = null
chgUser = null
endDate = 2004-12-31 12:00:00.0
id = 10
perCd = 2
perName = Q2 04/05 - Non-academics
periodInitiated = N
rptDate = 2005-02-15 12:00:00.0
srtDate = 2004-10-01 12:00:00.0

Printing Record number: 11

acadEndDate = 2005-03-31 12:00:00.0
acadSrtDate = 2005-01-01 12:00:00.0
addDate = 2005-09-27 11:33:21.0
addUser = ***INSTALL***
certDate = 2005-08-15 12:00:00.0
chgDate = null
chgUser = null
endDate = 2005-03-31 12:00:00.0
id = 11
perCd = 3
perName = Q3 04/05 - Non-academics
periodInitiated = N
rptDate = 2005-05-15 12:00:00.0
srtDate = 2005-01-01 12:00:00.0

Printing Record number: 12

acadEndDate = 2005-06-30 12:00:00.0
acadSrtDate = 2005-04-01 12:00:00.0
addDate = 2005-09-27 11:33:21.0
addUser = ***INSTALL***
certDate = 2005-11-15 12:00:00.0
chgDate = null
chgUser = null
endDate = 2005-06-30 12:00:00.0
id = 12
perCd = 4
perName = Q4 04/05 - Non-academics
periodInitiated = N
rptDate = 2005-08-15 12:00:00.0
srtDate = 2005-04-01 12:00:00.0

Online Installation Verification

Start the ERS application within the application server and monitor the console. The ERS startup servlet should produce output similar to the following:

```
Jan 2, 2006 11:15:51 AM org.apache.coyote.http11.Http11Protocol init
INFO: Initializing Coyote HTTP/1.1 on http-8080
Jan 2, 2006 11:15:51 AM org.apache.catalina.startup.Catalina load
INFO: Initialization processed in 1402 ms
Jan 2, 2006 11:15:51 AM org.apache.catalina.core.StandardService start
INFO: Starting service Catalina
Jan 2, 2006 11:15:51 AM org.apache.catalina.core.StandardEngine start
INFO: Starting Servlet Engine: Apache Tomcat/5.0.29
Jan 2, 2006 11:15:51 AM org.apache.catalina.core.StandardHost start
INFO: XML validation disabled
Jan 2, 2006 11:15:51 AM org.apache.catalina.core.StandardHost getDeployer
INFO: Create Host deployer for direct deployment ( non-jmx )
Jan 2, 2006 11:15:51 AM org.apache.catalina.core.StandardHostDeployer install
INFO: Processing Context configuration file URL file:C:\jakarta-tomcat-5.0.29\conf\Catalina\localhost\admin.xml
Jan 2, 2006 11:15:52 AM org.apache.struts.util.PropertyMessageResources <init>
INFO: Initializing, config='org.apache.struts.util.LocalStrings', returnNull=true
Jan 2, 2006 11:15:52 AM org.apache.struts.util.PropertyMessageResources <init>
INFO: Initializing, config='org.apache.struts.action.ActionResources', returnNull=true
Jan 2, 2006 11:15:53 AM org.apache.struts.util.PropertyMessageResources <init>
INFO: Initializing, config='org.apache.webapp.admin.ApplicationResources', returnNull=true
Jan 2, 2006 11:15:56 AM org.apache.catalina.core.StandardHostDeployer install
INFO: Processing Context configuration file URL file:C:\jakarta-tomcat-5.0.29\conf\Catalina\localhost\balancer.xml
Jan 2, 2006 11:15:56 AM org.apache.catalina.core.StandardHostDeployer install
INFO: Processing Context configuration file URL file:C:\jakarta-tomcat-5.0.29\conf\Catalina\localhost\EffortReporting.xml
11:15:59,918 INFO Environment:487 - Hibernate 2.1.9
11:15:59,948 INFO Environment:521 - loaded properties from resource hibernate.properties:
{hibernate.cglib.use_reflection_optimizer=true}
11:15:59,978 INFO Environment:547 - using CGLIB reflection optimizer
11:15:59,988 INFO Environment:576 - using JDK 1.4 java.sql.Timestamp handling
11:16:00,078 INFO Configuration:332 - Mapping resource:
edu/ucop/ers/domain/costsharingCommitment.hbm
11:16:00,819 INFO Binder:229 - Mapping class: edu.ucop.ers.domain.CostSharingCommitment ->
ERSCSEmpl
11:16:01,960 INFO Configuration:332 - Mapping resource: edu/ucop/ers/domain/comment.hbm
11:16:02,061 INFO Binder:229 - Mapping class: edu.ucop.ers.domain.Comment -> ERSCComments
11:16:02,361 INFO Configuration:332 - Mapping resource: edu/ucop/ers/domain/DOSCode.hbm
11:16:02,461 INFO Binder:229 - Mapping class: edu.ucop.ers.domain.DOSCode -> ERSDOSCode
11:16:02,561 INFO Configuration:332 - Mapping resource: edu/ucop/ers/domain/earning.hbm
11:16:02,702 INFO Binder:229 - Mapping class: edu.ucop.ers.domain.Earning -> ERSEarnings
11:16:02,802 INFO Binder:571 - Mapping collection: edu.ucop.ers.domain.Earning.earningsVersions
-> ERSEarningsVersion
11:16:02,832 INFO Configuration:332 - Mapping resource: edu/ucop/ers/domain/effortReport.hbm
11:16:02,902 INFO Binder:229 - Mapping class: edu.ucop.ers.domain.EffortReport -> ERSEffortRpt
11:16:02,972 INFO Binder:571 - Mapping collection:
edu.ucop.ers.domain.EffortReport.effortReportResources -> ERSEffortResource
11:16:03,132 INFO Binder:571 - Mapping collection:
edu.ucop.ers.domain.EffortReport.earningsVersions -> ERSEarningsVersion
11:16:03,132 INFO Configuration:332 - Mapping resource:
edu/ucop/ers/domain/effortReportResource.hbm
11:16:03,252 INFO Binder:229 - Mapping class: edu.ucop.ers.domain.EffortReportResource ->
ERSEffortResource
11:16:03,403 INFO Configuration:332 - Mapping resource: edu/ucop/ers/domain/employee.hbm
11:16:03,453 INFO Binder:229 - Mapping class: edu.ucop.ers.domain.Employee -> ERSEmpl
11:16:03,743 INFO Configuration:332 - Mapping resource: edu/ucop/ers/domain/function.hbm
11:16:03,863 INFO Binder:229 - Mapping class: edu.ucop.ers.domain.Function -> ERSFunction
11:16:03,863 INFO Binder:571 - Mapping collection: edu.ucop.ers.domain.Function.permissions ->
ERSUseFunction
11:16:03,873 INFO Configuration:332 - Mapping resource: edu/ucop/ers/domain/fundingSource.hbm
11:16:03,933 INFO Binder:229 - Mapping class: edu.ucop.ers.domain.FundingSource ->
ERSFundingSource
```

```

11:16:03,933 INFO Configuration:332 - Mapping resource: edu/ucop/ers/domain/itemCategory.hbm
11:16:04,034 INFO Binder:229 - Mapping class: edu.ucop.ers.domain.ItemCategory ->
ERSItemCategory
11:16:04,034 INFO Configuration:332 - Mapping resource: edu/ucop/ers/domain/organization.hbm
11:16:04,104 INFO Binder:229 - Mapping class: edu.ucop.ers.domain.Organization ->
ERSOrganization
11:16:04,284 INFO Configuration:332 - Mapping resource: edu/ucop/ers/domain/periodType.hbm
11:16:04,324 INFO Binder:229 - Mapping class: edu.ucop.ers.domain.PeriodType -> ERSPeriodType
11:16:04,594 INFO Configuration:332 - Mapping resource: edu/ucop/ers/domain/permission.hbm
11:16:04,725 INFO Binder:229 - Mapping class: edu.ucop.ers.domain.Permission -> ERSPermission
11:16:04,725 INFO Binder:571 - Mapping collection: edu.ucop.ers.domain.Permission.functions ->
ERSUseFunction
11:16:04,725 INFO Binder:571 - Mapping collection: edu.ucop.ers.domain.Permission.resources ->
ERSUseResource
11:16:04,735 INFO Binder:571 - Mapping collection: edu.ucop.ers.domain.Permission.roles ->
ERSRolePermission
11:16:04,735 INFO Configuration:332 - Mapping resource:
edu/ucop/ers/domain/possibleEffortReport.hbm
11:16:04,785 INFO Binder:229 - Mapping class: edu.ucop.ers.domain.PossibleEffortReport ->
ERSPossibleER
11:16:04,795 INFO Configuration:332 - Mapping resource:
edu/ucop/ers/domain/reportCategoryItem.hbm
11:16:04,865 INFO Binder:229 - Mapping class: edu.ucop.ers.domain.ReportCategoryItem ->
ERSRptCatItem
11:16:04,875 INFO Binder:571 - Mapping collection:
edu.ucop.ers.domain.ReportCategoryItem.earnings -> ERSCatEarnings
11:16:04,885 INFO Configuration:332 - Mapping resource: edu/ucop/ers/domain/reportFundItem.hbm
11:16:04,945 INFO Binder:229 - Mapping class: edu.ucop.ers.domain.ReportFundItem ->
ERSRptFundItem
11:16:04,965 INFO Binder:571 - Mapping collection: edu.ucop.ers.domain.ReportFundItem.earnings -
> ERSFundEarnings
11:16:04,965 INFO Configuration:332 - Mapping resource: edu/ucop/ers/domain/reportingPeriod.hbm
11:16:05,015 INFO Binder:229 - Mapping class: edu.ucop.ers.domain.ReportingPeriod ->
ERSRptPeriod
11:16:05,015 INFO Configuration:332 - Mapping resource: edu/ucop/ers/domain/resource.hbm
11:16:05,045 INFO Binder:229 - Mapping class: edu.ucop.ers.domain.Resource -> ERSResource
11:16:05,125 INFO Binder:571 - Mapping collection: edu.ucop.ers.domain.Resource.permissions ->
ERSUseResource
11:16:05,135 INFO Configuration:332 - Mapping resource: edu/ucop/ers/domain/resourceType.hbm
11:16:05,155 INFO Binder:229 - Mapping class: edu.ucop.ers.domain.ResourceType -> ERSResType
11:16:05,155 INFO Configuration:332 - Mapping resource: edu/ucop/ers/domain/role.hbm
11:16:05,255 INFO Binder:229 - Mapping class: edu.ucop.ers.domain.Role -> ERSRole
11:16:05,265 INFO Binder:571 - Mapping collection: edu.ucop.ers.domain.Role.rolePermissions ->
ERSRolePermission
11:16:05,506 INFO Configuration:332 - Mapping resource: edu/ucop/ers/domain/scheduleModel.hbm
11:16:05,556 INFO Binder:229 - Mapping class: edu.ucop.ers.domain.ScheduleModel -> ERSSchModel
11:16:05,576 INFO Configuration:332 - Mapping resource: edu/ucop/ers/domain/scheduleType.hbm
11:16:05,606 INFO Binder:229 - Mapping class: edu.ucop.ers.domain.ScheduleType -> ERSSchType
11:16:06,097 INFO Binder:571 - Mapping collection:
edu.ucop.ers.domain.ScheduleType.homeDepartments -> ERSSchDept
11:16:06,097 INFO Configuration:332 - Mapping resource: edu/ucop/ers/domain/sponsoredProject.hbm
11:16:06,117 INFO Binder:229 - Mapping class: edu.ucop.ers.domain.SponsoredProject ->
ERSSponsoredProject
11:16:06,247 INFO Configuration:332 - Mapping resource: edu/ucop/ers/domain/statusCode.hbm
11:16:06,297 INFO Binder:229 - Mapping class: edu.ucop.ers.domain.StatusCode -> ERSStatusCode
11:16:06,297 INFO Configuration:332 - Mapping resource: edu/ucop/ers/domain/timeCode.hbm
11:16:06,317 INFO Binder:229 - Mapping class: edu.ucop.ers.domain.TimeCode -> ERSTimeCode
11:16:06,337 INFO Configuration:332 - Mapping resource: edu/ucop/ers/domain/titleCode.hbm
11:16:06,367 INFO Binder:229 - Mapping class: edu.ucop.ers.domain.TitleCode -> ERSTitleCode
11:16:06,377 INFO Configuration:332 - Mapping resource: edu/ucop/ers/domain/user.hbm
11:16:06,437 INFO Binder:229 - Mapping class: edu.ucop.ers.domain.User -> ERSUser
11:16:06,567 INFO Configuration:332 - Mapping resource: edu/ucop/ers/domain/userRole.hbm
11:16:06,617 INFO Binder:229 - Mapping class: edu.ucop.ers.domain.UserRole -> ERSUserRole
11:16:06,627 INFO Configuration:332 - Mapping resource: edu/ucop/ers/domain/payCategory.hbm
11:16:06,677 INFO Binder:229 - Mapping class: edu.ucop.ers.domain.PayCategory -> ERSPayCat
11:16:06,697 INFO Configuration:332 - Mapping resource: edu/ucop/ers/domain/homeDepartment.hbm
11:16:06,757 INFO Binder:229 - Mapping class: edu.ucop.ers.domain.HomeDepartment -> ERSHomeDept
11:16:06,767 INFO Binder:571 - Mapping collection:
edu.ucop.ers.domain.HomeDepartment.scheduleTypes -> ERSSchDept
11:16:06,888 INFO Configuration:332 - Mapping resource: edu/ucop/ers/domain/messageLog.hbm
11:16:06,998 INFO Binder:229 - Mapping class: edu.ucop.ers.domain.MessageLog -> ERSMessageLog

```

```

11:16:06,998 INFO Configuration:332 - Mapping resource: edu/ucop/ers/domain/includeEmployee.hbm
11:16:07,108 INFO Binder:229 - Mapping class: edu.ucop.ers.domain.IncludeEmployee ->
ERSIncludeEmpl
11:16:07,118 INFO Configuration:332 - Mapping resource:
edu/ucop/ers/domain/academicAppointmentBasis.hbm
11:16:07,158 INFO Binder:229 - Mapping class: edu.ucop.ers.domain.AcademicAppointmentBasis ->
ERSAcadApptBasis
11:16:07,168 INFO Configuration:332 - Mapping resource:
edu/ucop/ers/domain/academicPayPeriod.hbm
11:16:07,208 INFO Binder:229 - Mapping class: edu.ucop.ers.domain.AcademicPayPeriod ->
ERSAcadPayPer
11:16:07,228 INFO Configuration:332 - Mapping resource: edu/ucop/ers/domain/exemptIndicator.hbm
11:16:07,278 INFO Binder:229 - Mapping class: edu.ucop.ers.domain.ExemptIndicator ->
ERSExemptInd
11:16:07,288 INFO Configuration:332 - Mapping resource:
edu/ucop/ers/domain/personalProgramCode.hbm
11:16:07,318 INFO Binder:229 - Mapping class: edu.ucop.ers.domain.PersonalProgramCode ->
ERSPersPgmCode
11:16:07,338 INFO Configuration:332 - Mapping resource: edu/ucop/ers/domain/piEmployee.hbm
11:16:07,408 INFO Binder:229 - Mapping class: edu.ucop.ers.domain.PiEmployee -> ERSPIEmpl
11:16:07,418 INFO Configuration:332 - Mapping resource:
edu/ucop/ers/domain/actualEffortReport.hbm
11:16:07,448 INFO Binder:229 - Mapping class: edu.ucop.ers.domain.ActualEffortReport ->
ERSActualER
11:16:07,459 INFO Configuration:332 - Mapping resource: edu/ucop/ers/domain/notificationText.hbm
11:16:07,529 INFO Binder:229 - Mapping class: edu.ucop.ers.domain.NotificationText ->
ERSNotificationText
11:16:07,539 INFO Configuration:332 - Mapping resource: edu/ucop/ers/domain/notification.hbm
11:16:07,639 INFO Binder:229 - Mapping class: edu.ucop.ers.domain.Notification ->
ERSNotification
11:16:07,649 INFO Configuration:332 - Mapping resource: edu/ucop/ers/domain/criteriaMaster.hbm
11:16:07,709 INFO Binder:229 - Mapping class: edu.ucop.ers.domain.CriteriaMaster ->
ERSCriteriaMaster
11:16:07,929 INFO Configuration:332 - Mapping resource:
edu/ucop/ers/domain/criteriaMasterUser.hbm
11:16:07,959 INFO Binder:229 - Mapping class: edu.ucop.ers.domain.CriteriaMasterUser ->
ERSCriteriaMasterUser
11:16:07,979 INFO Configuration:332 - Mapping resource:
edu/ucop/ers/domain/criteriaAccountDepartment.hbm
11:16:08,019 INFO Binder:229 - Mapping class: edu.ucop.ers.domain.CriteriaAccountDepartment ->
ERSCriteriaAccountDepartment
11:16:08,039 INFO Configuration:332 - Mapping resource:
edu/ucop/ers/domain/criteriaFundDepartment.hbm
11:16:08,079 INFO Binder:229 - Mapping class: edu.ucop.ers.domain.CriteriaFundDepartment ->
ERSCriteriaFundDepartment
11:16:08,089 INFO Configuration:332 - Mapping resource: edu/ucop/ers/domain/criteriaEmployee.hbm
11:16:08,129 INFO Binder:229 - Mapping class: edu.ucop.ers.domain.CriteriaEmployee ->
ERSCriteriaEmployee
11:16:08,139 INFO Configuration:332 - Mapping resource:
edu/ucop/ers/domain/criteriaHomeDepartment.hbm
11:16:08,260 INFO Binder:229 - Mapping class: edu.ucop.ers.domain.CriteriaHomeDepartment ->
ERSCriteriaHomeDepartment
11:16:08,280 INFO Configuration:332 - Mapping resource: edu/ucop/ers/domain/criteriaProject.hbm
11:16:08,310 INFO Binder:229 - Mapping class: edu.ucop.ers.domain.CriteriaProject ->
ERSCriteriaProject
11:16:08,320 INFO Configuration:332 - Mapping resource:
edu/ucop/ers/domain/criteriaFundingSource.hbm
11:16:08,350 INFO Binder:229 - Mapping class: edu.ucop.ers.domain.CriteriaFundingSource ->
ERSCriteriaFundingSource
11:16:08,360 INFO Configuration:332 - Mapping resource: edu/ucop/ers/domain/notificationRole.hbm
11:16:08,420 INFO Binder:229 - Mapping class: edu.ucop.ers.domain.NotificationRole ->
ERSNotificationRole
11:16:08,440 INFO Configuration:332 - Mapping resource: edu/ucop/ers/domain/resetToken.hbm
11:16:08,540 INFO Binder:229 - Mapping class: edu.ucop.ers.domain.ResetToken -> ERSResetToken
11:16:08,540 INFO Configuration:332 - Mapping resource: edu/ucop/ers/domain/preference.hbm
11:16:08,610 INFO Binder:229 - Mapping class: edu.ucop.ers.domain.Preference -> ERSPreference
11:16:08,610 INFO Configuration:332 - Mapping resource: edu/ucop/ers/domain/weightedEarning.hbm
11:16:08,650 INFO Binder:229 - Mapping class: edu.ucop.ers.domain.WeightedEarning ->
ERSWeightedEarning
11:16:08,660 INFO Configuration:332 - Mapping resource: edu/ucop/ers/domain/latepay.hbm
11:16:08,760 INFO Binder:229 - Mapping class: edu.ucop.ers.domain.LatePay -> ERSLatePay

```

```

11:16:08,790 INFO Configuration:332 - Mapping resource: edu/ucop/ers/domain/excludeUserToken.hbm
11:16:08,831 INFO Binder:229 - Mapping class: edu.ucop.ers.domain.ExcludeUserToken ->
ERSExcludeUserToken
11:16:08,831 INFO Configuration:641 - processing one-to-many association mappings
11:16:08,841 INFO Binder:1181 - Mapping collection:
edu.ucop.ers.domain.EffortReport.reportCategoryItems -> ERSRptCatItem
11:16:08,841 INFO Binder:1181 - Mapping collection:
edu.ucop.ers.domain.EffortReport.reportFundItems -> ERSRptFundItem
11:16:08,841 INFO Binder:1181 - Mapping collection: edu.ucop.ers.domain.EffortReport.comments ->
ERSComments
11:16:08,841 INFO Binder:1181 - Mapping collection: edu.ucop.ers.domain.Employee.users ->
ERSUser
11:16:08,841 INFO Binder:1181 - Mapping collection: edu.ucop.ers.domain.Employee.earnings ->
ERSEarnings
11:16:08,841 INFO Binder:1181 - Mapping collection:
edu.ucop.ers.domain.Employee.costSharingCommitments -> ERSCSEmpl
11:16:08,841 INFO Binder:1181 - Mapping collection:
edu.ucop.ers.domain.Employee.possibleEffortReports -> ERSPossibleER
11:16:08,851 INFO Binder:1181 - Mapping collection:
edu.ucop.ers.domain.Employee.actualEffortReports -> ERSActualER
11:16:08,851 INFO Binder:1181 - Mapping collection:
edu.ucop.ers.domain.Employee.sponsoredProjectsByPiEmpId -> ERSSponsoredProject
11:16:08,851 INFO Binder:1181 - Mapping collection:
edu.ucop.ers.domain.Employee.sponsoredProjectsByCoPiEmpId -> ERSSponsoredProject
11:16:08,851 INFO Binder:1181 - Mapping collection:
edu.ucop.ers.domain.FundingSource.costSharingCommitments -> ERSCSEmpl
11:16:08,851 INFO Binder:1181 - Mapping collection:
edu.ucop.ers.domain.ItemCategory.reportCategoryItems -> ERSRptCatItem
11:16:08,851 INFO Binder:1181 - Mapping collection:
edu.ucop.ers.domain.Organization.criteriaAccountDepartments -> ERSCriteriaAccountDepartment
11:16:08,851 INFO Binder:1181 - Mapping collection:
edu.ucop.ers.domain.Organization.criteriaFundDepartments -> ERSCriteriaFundDepartment
11:16:08,861 INFO Binder:1181 - Mapping collection: edu.ucop.ers.domain.Organization.acctOrg ->
ERSFundingSource
11:16:08,861 INFO Binder:1181 - Mapping collection: edu.ucop.ers.domain.Organization.fundOrg ->
ERSFundingSource
11:16:08,861 INFO Binder:1181 - Mapping collection:
edu.ucop.ers.domain.PeriodType.reportingPeriods -> ERSRptPeriod
11:16:08,861 INFO Binder:1181 - Mapping collection: edu.ucop.ers.domain.PeriodType.timeCodes ->
ERSTimeCode
11:16:08,861 INFO Binder:1181 - Mapping collection: edu.ucop.ers.domain.PeriodType.payCatetories
-> ERSPayCat
11:16:08,861 INFO Binder:1181 - Mapping collection: edu.ucop.ers.domain.PeriodType.dosCodes ->
ERSDOSCode
11:16:08,861 INFO Binder:1181 - Mapping collection:
edu.ucop.ers.domain.PeriodType.scheduleModels -> ERSSchModel
11:16:08,871 INFO Binder:1181 - Mapping collection: edu.ucop.ers.domain.PeriodType.earnings ->
ERSEarnings
11:16:08,871 INFO Binder:1181 - Mapping collection:
edu.ucop.ers.domain.ReportingPeriod.possibleEffortReports -> ERSPossibleER
11:16:08,871 INFO Binder:1181 - Mapping collection:
edu.ucop.ers.domain.ReportingPeriod.actualEffortReports -> ERSActualER
11:16:08,871 INFO Binder:1181 - Mapping collection: edu.ucop.ers.domain.Role.roleUsers ->
ERSUserRole
11:16:08,871 INFO Binder:1181 - Mapping collection: edu.ucop.ers.domain.Role.notificationRoles -
> ERSNotificationRole
11:16:08,871 INFO Binder:1181 - Mapping collection: edu.ucop.ers.domain.ScheduleType.titleCodes
-> ERSTitleCode
11:16:08,881 INFO Binder:1181 - Mapping collection:
edu.ucop.ers.domain.ScheduleType.reportingPeriods -> ERSRptPeriod
11:16:08,881 INFO Binder:1181 - Mapping collection:
edu.ucop.ers.domain.ScheduleType.scheduleModels -> ERSSchModel
11:16:08,881 INFO Binder:1181 - Mapping collection:
edu.ucop.ers.domain.ScheduleType.exemptIndicators -> ERSExemptInd
11:16:08,881 INFO Binder:1181 - Mapping collection:
edu.ucop.ers.domain.ScheduleType.academicAppointmentBasises -> ERSAcadApptBasis
11:16:08,881 INFO Binder:1181 - Mapping collection: edu.ucop.ers.domain.ScheduleType.employees -
> ERSEmpl
11:16:08,881 INFO Binder:1181 - Mapping collection:
edu.ucop.ers.domain.ScheduleType.academicPayPeriods -> ERSAcadPayPer

```

```

11:16:08,881 INFO Binder:1181 - Mapping collection:
edu.ucop.ers.domain.ScheduleType.personalProgramCodes -> ERSPersPgmCode
11:16:08,881 INFO Binder:1181 - Mapping collection:
edu.ucop.ers.domain.SponsoredProject.fundingSources -> ERSFundingSource
11:16:08,881 INFO Binder:1181 - Mapping collection:
edu.ucop.ers.domain.SponsoredProject.reportFundItems -> ERSRptFundItem
11:16:08,881 INFO Binder:1181 - Mapping collection:
edu.ucop.ers.domain.SponsoredProject.criteriaProjects -> ERSCriteriaProject
11:16:08,891 INFO Binder:1181 - Mapping collection: edu.ucop.ers.domain.User.subscribedSearches
-> ERSCriteriaMasterUser
11:16:08,891 INFO Binder:1181 - Mapping collection: edu.ucop.ers.domain.User.userRoles ->
ERSUserRole
11:16:08,891 INFO Binder:1181 - Mapping collection: edu.ucop.ers.domain.HomeDepartment.employees
-> ERSEmpl
11:16:08,891 INFO Binder:1181 - Mapping collection:
edu.ucop.ers.domain.HomeDepartment.criteriaHomeDepartments -> ERSCriteriaHomeDepartment
11:16:08,891 INFO Binder:1181 - Mapping collection:
edu.ucop.ers.domain.ActualEffortReport.effortReports -> ERSEffortRpt
11:16:08,891 INFO Binder:1181 - Mapping collection:
edu.ucop.ers.domain.NotificationText.notificationRoles -> ERSNotificationRole
11:16:08,891 INFO Binder:1181 - Mapping collection:
edu.ucop.ers.domain.CriteriaMaster.searchSubscribers -> ERSCriteriaMasterUser
11:16:08,891 INFO Binder:1181 - Mapping collection:
edu.ucop.ers.domain.CriteriaMaster.criteriaProjects -> ERSCriteriaProject
11:16:08,891 INFO Binder:1181 - Mapping collection:
edu.ucop.ers.domain.CriteriaMaster.criteriaAccountDepartments -> ERSCriteriaAccountDepartment
11:16:08,901 INFO Binder:1181 - Mapping collection:
edu.ucop.ers.domain.CriteriaMaster.criteriaHomeDepartments -> ERSCriteriaHomeDepartment
11:16:08,901 INFO Binder:1181 - Mapping collection:
edu.ucop.ers.domain.CriteriaMaster.criteriaEmployees -> ERSCriteriaEmployee
11:16:08,901 INFO Binder:1181 - Mapping collection:
edu.ucop.ers.domain.CriteriaMaster.criteriaFundDepartments -> ERSCriteriaFundDepartment
11:16:08,911 INFO Binder:1181 - Mapping collection:
edu.ucop.ers.domain.CriteriaMaster.criteriaFundingSources -> ERSCriteriaFundingSource
11:16:08,911 INFO Binder:1181 - Mapping collection:
edu.ucop.ers.domain.CriteriaMaster.defaultPreferences -> ERSPreference
11:16:08,911 INFO Binder:1181 - Mapping collection:
edu.ucop.ers.domain.CriteriaMaster.adHocPreferences -> ERSPreference
11:16:08,911 INFO Binder:1181 - Mapping collection:
edu.ucop.ers.domain.CriteriaMaster.lastSearchPreferences -> ERSPreference
11:16:08,911 INFO Configuration:650 - processing one-to-one association property references
11:16:08,931 INFO Configuration:675 - processing foreign key constraints
11:16:08,991 INFO Dialect:86 - Using dialect: net.sf.hibernate.dialect.SQLServerDialect
11:16:09,031 INFO SettingsFactory:74 - Use outer join fetching: true
11:16:09,041 INFO C3P0ConnectionProvider:48 - C3P0 using driver:
net.sourceforge.jtds.jdbc.Driver at URL: jdbc:jtds:sqlserver://wprp.ucop.edu:11433/erstrain
11:16:09,041 INFO C3P0ConnectionProvider:49 - Connection properties: {user=ersdbo,
password=xxxxxx}
11:16:09,181 INFO TransactionManagerLookupFactory:33 - No TransactionManagerLookup configured
(in JTA environment, use of process level read-write cache is not recommended)
Initializing c3p0 pool... com.mchange.v2.c3p0.PoolBackedDataSource@13a3d36 [
connectionPoolDataSource -> com.mchange.v2.c3p0.WrapperConnectionPoolDataSource@10699ea [
acquireIncrement -> 1, autoCommitOnClose -> false, connectionTesterClassName ->
com.mchange.v2.c3p0.impl.DefaultConnectionTester, factoryClassLocation -> null,
forceIgnoreUnresolvedTransactions -> false, idleConnectionTestPeriod -> 0, initialPoolSize -> 5,
maxIdleTime -> 0, maxPoolSize -> 20, maxStatements -> 50, minPoolSize -> 5, nestedDataSource ->
com.mchange.v2.c3p0.DriverManagerDataSource@88b858 [ description -> null, driverClass -> null,
factoryClassLocation -> null, jdbcUrl -> jdbc:jtds:sqlserver://wprp.ucop.edu:11433/erstrain,
properties -> {user=ersdbo, password=ersteam1} ], propertyCycle -> 300, testConnectionOnCheckout
-> false ], factoryClassLocation -> null, numHelperThreads -> 3 ]
11:16:09,832 INFO SettingsFactory:114 - Use scrollable result sets: true
11:16:09,832 INFO SettingsFactory:117 - Use JDBC3 getGeneratedKeys(): true
11:16:09,832 INFO SettingsFactory:120 - Optimize cache for minimal puts: false
11:16:09,842 INFO SettingsFactory:129 - Query language substitutions: {}
11:16:09,842 INFO SettingsFactory:140 - cache provider: net.sf.hibernate.cache.EhCacheProvider
11:16:09,862 INFO Configuration:1130 - instantiating and configuring caches
11:16:09,892 WARN Configurator:123 - No configuration found. Configuring ehcache from ehcache-
failsafe.xml found in the classpath: file:/C:/jakarta-tomcat-
5.0.29/work/Catalina/localhost/EffortReporting/loader/ehcache-failsafe.xml
11:16:09,982 INFO SessionFactoryImpl:119 - building session factory

```

```

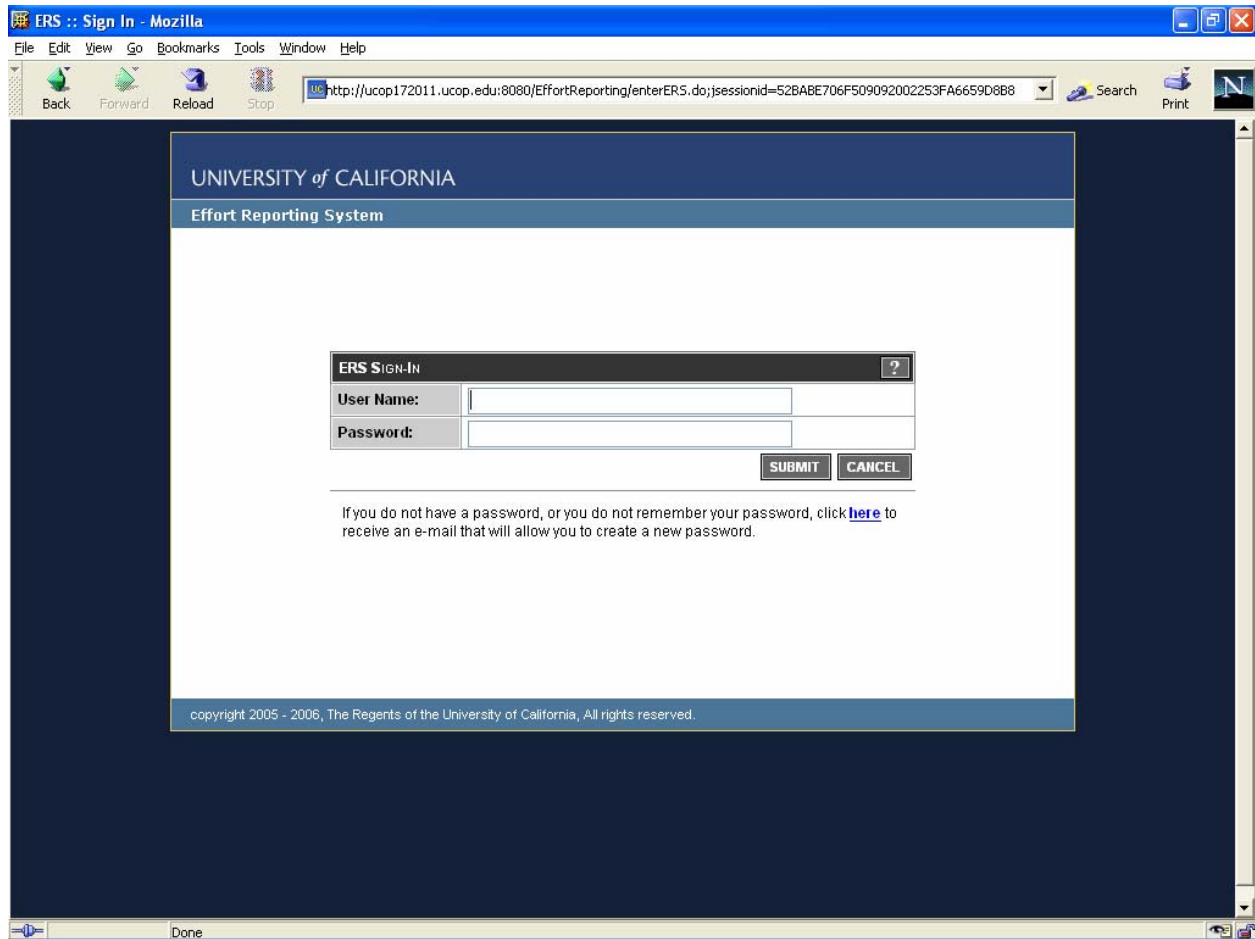
11:16:11,995 INFO SessionFactoryObjectFactory:82 - Not binding factory to JNDI, no JNDI name
configured
Jan 2, 2006 11:16:15 AM org.apache.catalina.core.StandardHostDeployer install
INFO: Processing Context configuration file URL file:C:\jakarta-tomcat-
5.0.29\conf\Catalina\localhost\jsp-examples.xml
Jan 2, 2006 11:16:15 AM org.apache.catalina.core.StandardHostDeployer install
INFO: Processing Context configuration file URL file:C:\jakarta-tomcat-
5.0.29\conf\Catalina\localhost\manager.xml
Jan 2, 2006 11:16:15 AM org.apache.catalina.core.StandardHostDeployer install
INFO: Processing Context configuration file URL file:C:\jakarta-tomcat-
5.0.29\conf\Catalina\localhost\ROOT.xml
Jan 2, 2006 11:16:15 AM org.apache.catalina.core.StandardHostDeployer install
INFO: Processing Context configuration file URL file:C:\jakarta-tomcat-
5.0.29\conf\Catalina\localhost\servlets-examples.xml
Jan 2, 2006 11:16:16 AM org.apache.catalina.core.StandardHostDeployer install
INFO: Processing Context configuration file URL file:C:\jakarta-tomcat-
5.0.29\conf\Catalina\localhost\tomcat-docs.xml
Jan 2, 2006 11:16:16 AM org.apache.catalina.core.StandardHostDeployer install
INFO: Processing Context configuration file URL file:C:\jakarta-tomcat-
5.0.29\conf\Catalina\localhost\webdav.xml
Jan 2, 2006 11:16:16 AM org.apache.coyote.http11.Http11Protocol start
INFO: Starting Coyote HTTP/1.1 on http-8080
Jan 2, 2006 11:16:16 AM org.apache.jk.common.ChannelSocket init
INFO: JK2: ajp13 listening on /0.0.0.0:8009
Jan 2, 2006 11:16:16 AM org.apache.jk.server.JkMain start
INFO: Jk running ID=0 time=10/140 config=C:\jakarta-tomcat-5.0.29\conf\jk2.properties
Jan 2, 2006 11:16:16 AM org.apache.catalina.startup.Catalina start
INFO: Server startup in 25357 ms

```

If the “Server startup” message appears and no exceptions have occurred within the startup servlet, then continue with the verification procedure.

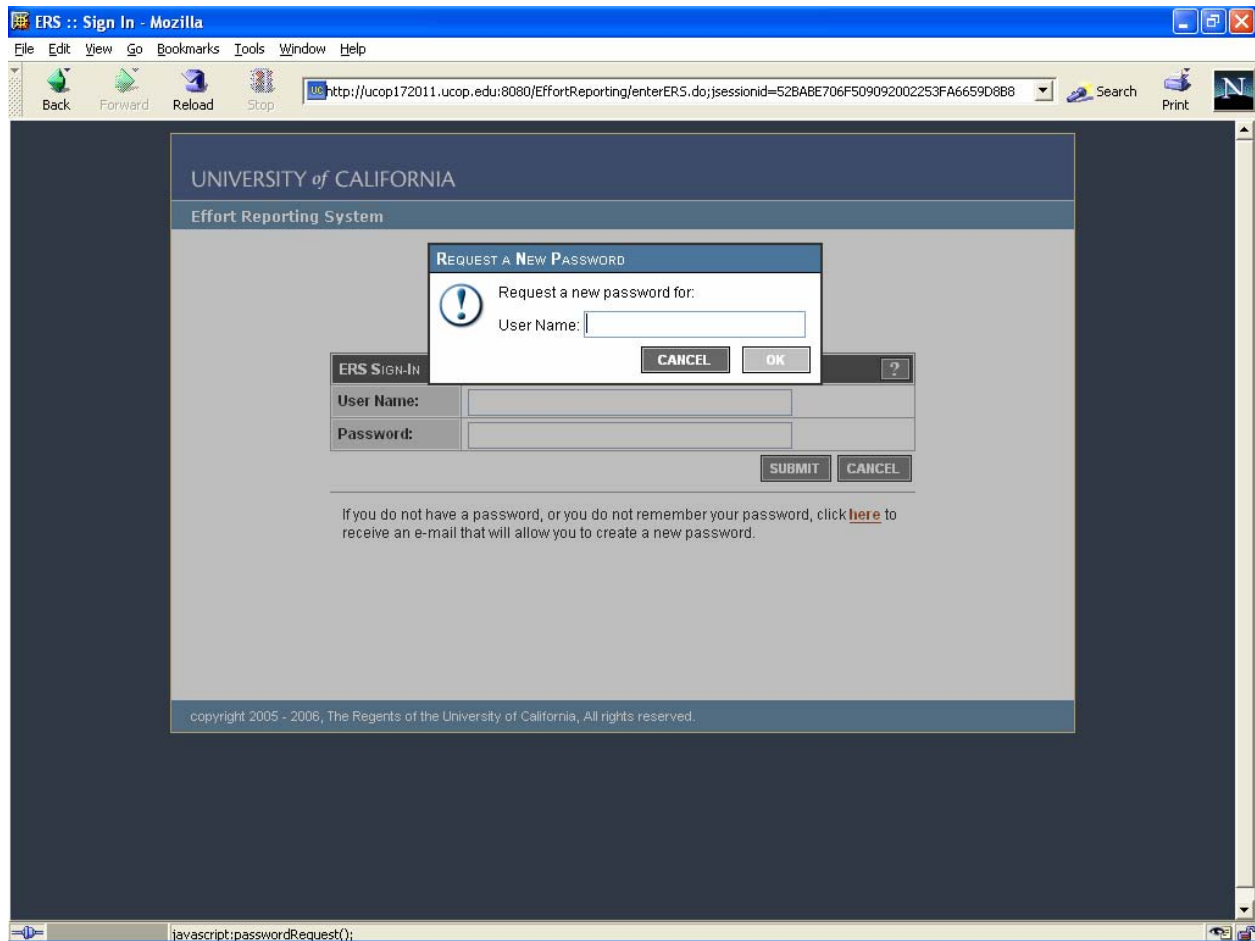
Access the web application URL:
http://<hostname:port>/<application-folder>

The index.jsp file should be selected by default and a redirect will occur to the ERS signon page.



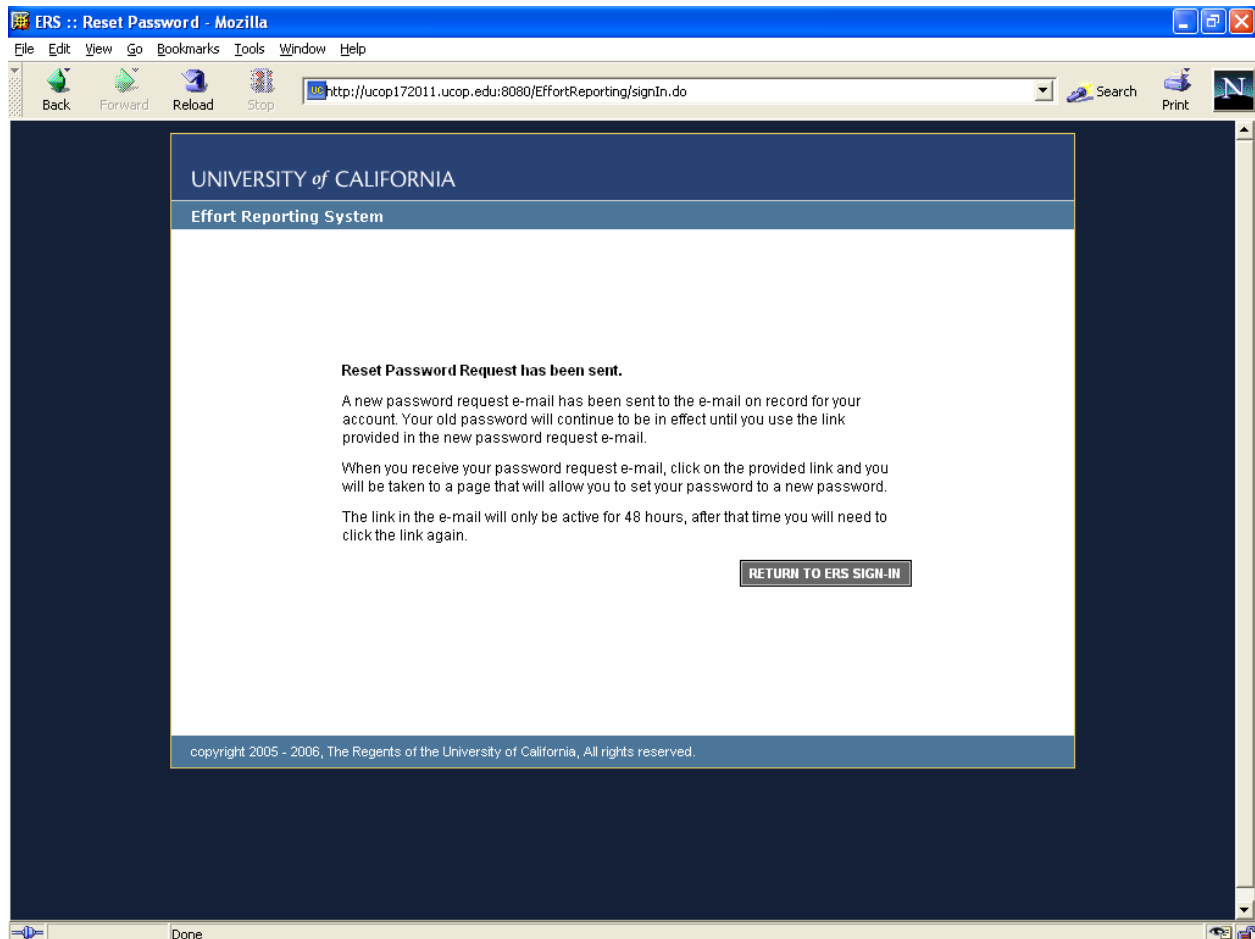
The screenshot shows a Mozilla browser window titled "ERS :: Sign In - Mozilla". The address bar displays the URL: `http://ucop172011.ucop.edu:8080/EffortReporting/enterERS.do;jsessionid=52BABE706F509092002253FA6659D8B8`. The page content features a dark blue header with the text "UNIVERSITY of CALIFORNIA" and "Effort Reporting System". Below the header is a white sign-in box titled "ERS SIGN-IN" with a help icon. It contains two input fields: "User Name:" and "Password:". To the right of these fields are "SUBMIT" and "CANCEL" buttons. Below the input fields, a message states: "If you do not have a password, or you do not remember your password, click [here](#) to receive an e-mail that will allow you to create a new password." At the bottom of the page, a copyright notice reads: "copyright 2005 - 2006, The Regents of the University of California, All rights reserved." The browser's status bar at the bottom shows "Done".

From the signon page, click the link to request a new password.



Enter the Sys.Admin userID created during the installation script and click OK.

Receive confirmation that the password reset request has been accepted.



If the mail server configuration was successful and the Sys.Admin userID was created with a valid email address, a message should be received momentarily that contains a link to complete the password reset process.

When the password reset is completed, proceed to login normally to the application.

Note that no data will be visible in the web application until the batch programs to load the database have been run.

Operations Overview

ERS Operations consist of three main segments:

1. batch interface file loading
2. batch report period processing
3. online (web) application access

Note: ERS is not designed to support concurrent batch and online updates. It is important to insure that web application access is disabled during batch processing. The recommended technique for disabling application access is to stop the web application within the application server, or to stop the application server entirely during batch processing.

Batch Interface File Loading

ERS takes three required and two optional interfaces files as inputs. These files must be prepared using campus data according to the published specification for ERS interface files. Once the files are prepared they should be transferred to the ERS server and stored there for processing. A naming convention is recommended for identifying multiple files of the same type.

Each interface file should be loaded in the following order:

	<u>Interface</u>	<u>Description</u>	<u>Load Program</u>
1.	DEPT	Campus department list and organizational hierarchy	RunDepartmentInterface
2.	FS	Financial/contracts & grants system interface	RunFinanceInterface
3.	PPS	Payroll/Personnel System - payroll data. Can load multiple files as needed.	RunPARInterface
4.	CS	Cost sharing system data. This is an optional interface.	RunCostSharingInterface
5.	USER	User table. This is an optional interface for campuses using an external authentication mechanism.	RunUserInterface
6.	ORGDEPT	Org-HomeDept Interface Processes the optional interface file that associates organization unit codes with PPS Home Department codes. For use with the decentralized security administration feature. This program should be run after the DEPT interface is loaded.	RunOrgDeptInterface

All of the load programs are in package `edu.ucop.ers.generate.batch` and should be qualified with the full package name when executed from the command line.

A sample shell script `ers-run-ILP-sample.sh` has been provided in the `/scripts` folder to demonstrate how to run ERS batch programs from the command line.

The ERS master configuration file `ERSConfig.XML` must be copied and customized prior to batch interface file loading. The path and folder name which contains the input files must be defined in the Interface/Filepath item:

Example for Unix:

```
<Interface>
  <Filepath>/home/ers/interfaces/</Filepath>
</Interface>
```

Example for Windows:

```
<Interface>
  <Filepath>z:\interfaces\ersfiles\</Filepath>
</Interface>
```

Note that the trailing slash or backslash is required on this parameter.

Required Parameters

All of the batch interface file loading programs require a single parameter – the name of the input file to be processed.

The path and folder information is taken from the configuration option described above.

If this parameter is missing, or references a invalid file, the programs will print a message to the console and exit.

Re-Runs

All batch interface file loading programs are designed to be re-runnable. In the event of a fatal exception that causes the program to exit, simple rerun the program with the same input file after correcting the problem.

Frequency

The frequency of loading the ERS database depends on campus operational considerations.

Typically PPS interface files will be loaded on a regular, ongoing basis as the PPS compute is run. The other interface files should be run on a regular basis but it is not

required that they run as frequently as each payroll compute. It is only important that the latest DEPT, FS and CS data be loaded prior to beginning an effort reporting period.

All of the batch interface file loading programs are designed to process changes that occur over time. That is, it is not necessary to empty the database of old data prior to loading new data. The programs examine the input data and detect what information needs to be added and what information already exists in the ERS database and must be updated.

Monitoring

The batch interface file loading programs write diagnostic messages to the ERSMessageLog table. All data-related issues will be identified here rather than on the console. Error messages may be viewed using the System Administration web pages.

A notification type IERR (interface error) is provided to allow the notification subsystem to be used for monitoring batch interface file processing. In the event of a data error in a batch interface file loading program, any roles which are defined to receive this notification type will receive an email message recommending examination of the ERSMessageLog table.

Batch Report Period Processing

Once all of the required input files are loaded into the ERS database, the next segment of ERS processing can begin. Report Period processing consists of three steps:

1. Initiating the reporting period
2. Generating effort reports
3. Generating security resources for new effort reports

<u>Acronym</u>	<u>Description</u>	<u>Program</u>
RPI	Report Period Initiation Identifies employees who should receive an effort report	RunReportPeriodInit
GEN	Report Generation Creates an effort report for each employee identified for the period	RunGenerate
RRG	Report Resource Generation Builds security descriptors for each newly created effort report	RunResourceGenerator
LP	Late Pay Process Re-issues effort reports affected by late-arriving payroll transactions	RunGenerateLateReports

Required Parameters

RPI, GEN and RRG accept a single parameter which is the period ID number to be processed. This value can be obtained by viewing the reporting period list in the System Administration web pages.

LP does not require any parameters.

Re-Runs

The batch report period processing programs cannot be rerun without manual intervention to clear any partial results and reset the period status indicator. Attempting to re-run a batch period processing program will result in an error message.

Frequency

Report period processing is based on the campus' defined reporting schedule. Typically the RPI, GEN and RRG programs will be run in sequence for each reporting period.

The LP process should be run after each PPS interface file is loaded to update any existing reports with new payroll data and to create any newly required effort reports for existing report periods that have been run.

Monitoring

The batch report period programs write diagnostic messages to the ERSMessageLog table. All data-related issues will be identified here rather than on the console. Error messages may be viewed using the System Administration web pages.

A notification type RNEW (new reporting period) exists to allow the notification subsystem to be used for monitoring batch report period processing. At the successful completion of a report period, any roles which are defined to receive this notification type will receive an email message announcing the availability of effort reports for the new period.

Additional Batch Programs

ERS includes additional batch programs for the notification subsystem:

<u>Description</u>	<u>Program</u>
<p>Notification Dispatcher</p> <p>Processes the notification event queue and sends email based on system events.</p> <p>This program should be run periodically throughout the day using a system scheduler service.</p>	<p>RunNotificationDispatcher</p>
<p>Nightly Maintenance</p> <p>Performs various housekeeping tasks for system maintenance. As shipped, the only task performed is to send reminder notifications for open or overdue reports.</p> <p>Additional maintenance tasks may be added to this program in the future.</p>	<p>RunNightlyMaintenance</p>

System Administration

This section describes the design and major concepts of ERS schedule definition, security administration and notification administration. These tasks are performed from the System Administration web application.

Schedule Definition

The ERS schedule is a customizable feature which defines the effort reporting periods that the campus selects and the characteristics of the employees that will be included in each period.

Schedule Type: A schedule type defines a group of employees. Employees are assigned to a schedule type based on PPS attributes such as exempt status, appointment basis/paid over, personnel program code or other attributes.

Reporting Period: For each schedule type, one or more reporting periods are created. The reporting period defines primarily which payroll periods will be included in the effort reporting period.

Schedule Model: A schedule model is a set of sample periods that apply to the schedule type. The model acts as a “template” for creating a set of reporting period records for a given schedule type.

The normal process for creating the campus ERS schedule involves two required steps and one optional step:

1. Define schedule types and identify employee attributes that will be used to group employees. The supported employee attributes that can be used for schedule assignment are:
 - Personnel Program Code
 - Exempt Indicator
 - Academic Appointment Basis/Academic Pay Period
 - Title Code
 - Home Department Code
2. Define reporting periods for each schedule type which correspond to the academic periods in use at the campus. For example, academic quarters or semesters. Make sure to include a reporting period for summer or off-period research for any schedule type that will include academic staff.

The recommendation is that a set of reporting periods be created in advance of a new fiscal year. It is permissible to create multiple sets of reporting periods for multiple years in advance, if desired.

3. Optionally, the campus can create a schedule model to simplify the creation of a set of new reporting periods for each year. The model can be used to generate reporting period records so that the reporting period information doesn't have to be manually entered.

Security Administration

ERS includes a built-in authorization module to manage permissions and roles which control access to effort reports. Campuses may use this internal authorization module or may use an external authorization mechanism described in the *ERS Customization Guide*.

The internal authorization module involves establishing permissions which define a level of access to a set of effort reports. The permission includes a function, which is a user's intended action toward the effort report, and a resource, which is an identifier of that effort report.

ERS functions are:

View	user can view an effort report
Review	user can edit an effort report
Certify	user can certify an effort report
Payroll	user can view the payroll details of an effort report

These additional functions operate independently of the resource defined in the permission.

Coord	user can access selected tasks in the system administration module
Ops	user can access selected tasks in the system administration module
Security	user can administer users, functions, permissions and roles

ERS resource types are:

<u>Resource Type</u>	<u>Contains value</u>
Employee ID	Employee ID of the employee on the effort report
Home Department	Home department code of the employee on the effort report
Sponsored Project	Sponsored project – one for each project ID associated with a sponsored project line on the effort report
Funding Source-Fund Department	Funding source – fund department - one for each FAU associated with a sponsored project line on the effort report
Funding Source-Account Department	Funding source – account department – one for each FAU associated with a sponsored project line on the effort report

Defining a permission consist of selecting the appropriate functions to control the access being given, and then specifying one or more resources to identify which effort reports the function will apply to.

Once permissions are defined, they may be added or grouped into roles. A role is a mechanism for collecting sets of permissions together so that the authority that the permissions represent can be shared among multiple users. This avoids needing to create sets of permissions multiple times.

Once a role is defined, it can be attached to one or more users, granting that user the access defined in the set of permissions contained in the role.

Centralized Security Administration

After installation, the sys.admin account should be used to establish a security administrator account. This account must be granted the security administrator role and should then be used subsequently to establish users, roles and permissions. It is recommended that the sys.admin account not be used to administer security.

Decentralized Security Administration

The ERS Internal Authorization module includes an optional feature to allow campuses to delegate authority for creating and managing ERS roles and permissions to departmental security administrators.

When the feature is enabled, several screens in System Administration change to allow editing and display of a security organization that owns a permission or role. A security administrator for that organization can manage any permissions or roles that are owned by that organizational unit. Without this feature, administration of permissions is not restricted and any user with security administrator role can create permissions and roles granting access to any effort reports in the system.

When creating permissions, departmental security administrators can only access resources that are within their scope of control. For example, a departmental security administrator can create a permission to view effort reports for people in their home department – but cannot create a permission to view effort reports for people that are in another home department.

Delegated security administration rights are hierarchical. If a security administrator is created for a high-level organizational unit, such as a division, that administrator will automatically be given access to all subordinate organization units such as sub-division or department. In this manner, security administration can be delegated to the appropriate level based on local operational considerations.

To create a departmental security administrator, a user with SYSADMIN role must add the SECADMIN role to a user. The user with SECADMIN role will then create specific permissions and roles to control access to effort reports. SYSADMIN role cannot create permissions directly.

Users can be designated as departmental security administrators in two ways. Using system administration, a User record can be edited to add the SECADMIN role and the associated organization unit for which they are being given control. Or, the organization tree can be browsed to select a specific organizational unit. Once selected, the Organization unit record can be edited to add the user ID of the person who should be given security administration rights.

Editing the security details for an organization unit also provides the ability to associate PPS Home Department codes with the organization unit code. While the normal mechanism for creating these associations would be by loading the ORGDEPT interface, it is also possible to add, edit and delete these associations manually using this page.

For more information on this feature, consult on-line help within the system administration module.

Notifications

ERS includes a notification subsystem which sends automated email messages to alert ERS users to various events that occur in the system.

The notifications that ERS will generate are:

1. when new effort reports are created as a result of report period initiation
2. when an error has occurred in batch processing
3. when an effort report is reissued by the system due to payroll changes
4. when an effort report is reopened for some reason after it was certified
5. when a certified line on a multi-line certification report is decertified

Notifications are related to security by way of the role definition. Users are selected to receive notifications by being members of a role that is defined to receive notifications of a selected type.

A role can have one or more notification event types associated with it. A typical configuration would be to create a role with permissions for a departmental ER coordinator, and then associate multiple notification types with this role so that the coordinator has both permissions and also receives notifications. It is possible to have a role with permissions only, and no notifications.

In addition to the event-driven notification types described above, ERS will generate reminder notifications when effort report certifications are coming due. The system supports a configuration option which specifies the number of days prior to the certification due date to send reminders:

1. to departmental effort reporting coordinators, and,
2. to the principal investigator and co-principal investigator for each sponsored project that has open effort reports.

The reminder notification types may be disabled completely with a configuration option.

Post-Installation Tasks

Campuses should consider the following questions in planning for a production implementation of ERS:

- Review and modify installation script which loads campus-specific data values:
 1. ERSDOSCode
 2. ERSPayCategory
 3. ERSTimeCode
- Review and modify installation script which establishes a “starter” schedule and reporting periods:
 1. ERSScheduleType
 - a. ~~ERSAcadApptBasis~~
 - b. ~~ERSAcadPayPer~~
 - c. ERSAppointment
 - d. ERSPersPgmCode
 - e. ERSExemptInd
 - f. ERSTitleCode
 2. ERSScheduleModel
 3. ERSReportingPeriod
- Establish operational procedures and scheduling of report period processing and monitoring batch processing
- Consider approaches for authentication and authorization and potential integration with existing campus frameworks
- Perform customization according to the *ERS Customization Guide*
- For initial startup for the first reporting period, insure that all required PPS PAR files have been gathered are loaded so that all transactions are available for report generation.
- Analyze database performance and tune as necessary. Several large tables are sensitive to updated statistics and index organization. Running routine maintenance on ERS Earnings, ERS Empl and ERS FundingSource tables is advisable.

Application Source Documentation

Complete inventory and documentation of the application source code is provided in Javadoc format in a separate document.

Application Database Tables

<u>Table Name</u>	<u>Description</u>
ERSAcadApptBasis	Match values for schedule assignment
ERSAcadPayPer	Match values for schedule assignment
ERSAppointment	Match values for schedule assignment
ERSActualER	Each emp in a period that will get an ER
ERSCatEarnings	Earnings assigned to an ER "below the line"
ERSComments	Comment text associated with effort reports
ERSCriteriaAccountDepartment	Saved search criteria type: Account Dept
ERSCriteriaEmployee	Saved search criteria type: Employee ID
ERSCriteriaFundDepartment	Saved search criteria type: Fund Dept
ERSCriteriaFundingSource	Saved search criteria type: FAU
ERSCriteriaHomeDepartment	Saved search criteria type: Home Dept
ERSCriteriaMaster	Saved search criteria - parent record
ERSCriteriaMasterUser	Owners and sharers of saved searches
ERSCriteriaProject	Saved search criteria type: Project ID
ERSCSEmpl	Imported cost sharing data
ERSDOSCode	Match values for pay selection
ERSEarnings	Original earnings loaded from PPS PAR
ERSEarningsVersion	Earnings associated with each effort report
ERSEffortRpt	Parent record for an effort report version
ERSEmpl	Employee data built from PPS PAR input
ERSERResource	Security identifiers for each effort report
ERSExcludeUserToken	List of employee IDs who cannot certify
ERSExemptInd	Match values for schedule assignment
ERSFunction	Static list of security functions
ERSFundEarnings	Earnings assigned to an ER "above the line"
ERSFundingSource	Each FAU loaded from the FS interface file
ERSHomeDept	Home department list derived from employees
ERSIncludeEmpl	Employee IDs who should always get an ER
ERSItemCategory	Static list of below-the-line lines
ERSLatePay	Earnings that affect existing effort rpts
ERSMessageLog	Messages generated by batch processing
ERSNotification	Notification events triggered by the app
ERSNotificationRole	Associates event types and roles who get
ERSNotificationText	Notification message templates
ERSOrganization	Organization information from DEPT interfce
ERSPayCat	Match values for pay selection
ERSPeriodType	Static list of report period type codes
ERSPermission	Permission names created by security admin
ERSPersPgmCode	Match values for schedule assignment
ERSPIEmpl	Employee IDs of PIs identified thru FS load
ERSPossibleER	Each emp that belongs in a given rpt period
ERSPreference	Stores user preferences for web application
ERSResetToken	Stores password reset tokens
ERSResource	Resource IDs created as part of permissions
ERSResType	Static list of security identifier types
ERSRole	Role names created by security admin
ERSRolePermission	Associates roles with permissions

ERSRptCatItem	Effort report lines - "below the line"
ERSRptFundItem	Effort report lines - "above the line"
ERSRptPeriod	Stores defined effort reporting periods
ERSSchDept	Match values for schedule assignment
ERSSchAppt	Match values for schedule assignment
ERSSchModel	Defines reporting period templates
ERSSchType	Defines groups of rpt pds and emp attribs
ERSSponsoredProject	Each sponsored project from the FS intf
ERSStatusCode	Static list of report status codes
ERSTimeCode	Match values for pay selection
ERSTitleCode	Match values for schedule assignment
ERSUseFunction	Associates permissions and functions
ERSUser	Each user loaded via the USER interface
ERSUseResource	Associates resources and permissions
ERSUserRole	Associates roles with users
ERSWeightedEarning	Earnings that have been weighted for combos
ERSFilterCategory	Groups report statuses for filtering
ERSStatusFilter	Individual status codes in filter groups
ERSOrgAdmin	Associates users (admins) with org codes
ERSOrganizationFlat	Denormalized version of ERSOrganization
ERSOrgDept	Associates org code with PPS home dept code